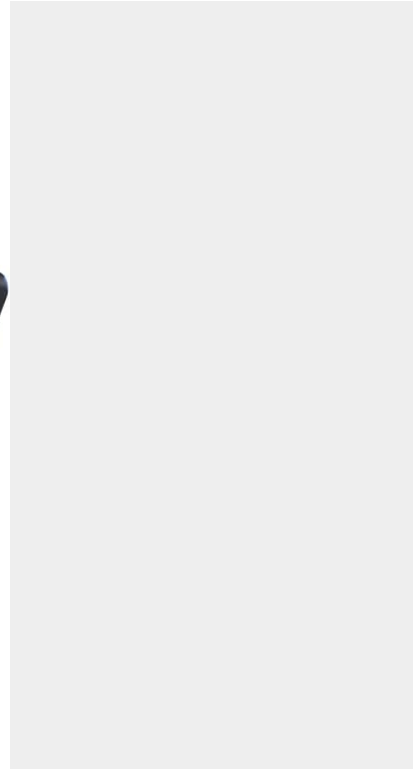
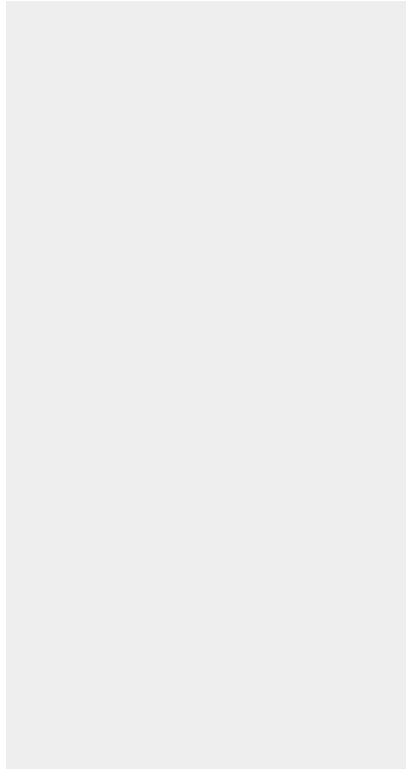




12-48V VARIABLE SPEED CONTROLLER

SKU: 12vcontrol1



Price: ~~\$99.00~~ \$94.05

Add to Cart

Categories: [12v - 24v Pumps](#), [Misc. Pump Products](#) |

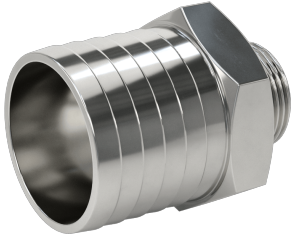
SPECIFICATIONS

Weight	1 lbs
--------	-------

PRODUCT DESCRIPTION

Applicable voltage: DC 12-48V wide voltage, 25kHz PWM frequency;
 Applicable current: 20A rated/long-time working current, 40A maximum current, 1200W peak power;
 Multi-speed: Multi-speed stepless adjustment, 0-100% PWM output;
 Upgraded version: Support PLC control, equipped with Forward/Stop/Reverse switch;
 Attention: Only applicable to brushed motors, please use DC power supply and connect the positive and negative poles correctly, direct connection to AC power is strictly prohibited.

RELATED PRODUCTS



**2" Hose Barb to 1"
NPT Adapter
Stainless**



**480V Oil Pump at
7GPM**



**Extreme Oil
Centrifuge**



**1HP VFD for 12GPM
Pump - Switched
Outdoor**

Since 2009, we have been supplying portable and stationary pumps for moving all types of oil. Oil cleaning centrifuges are also important tools to re-use oil as fuel or lubricant.

Contact Us:

2121 Natomas Crossing STE 200-218

Sacramento, CA 95835

1-888-959-9311

info@alternativefuelmecca.com

