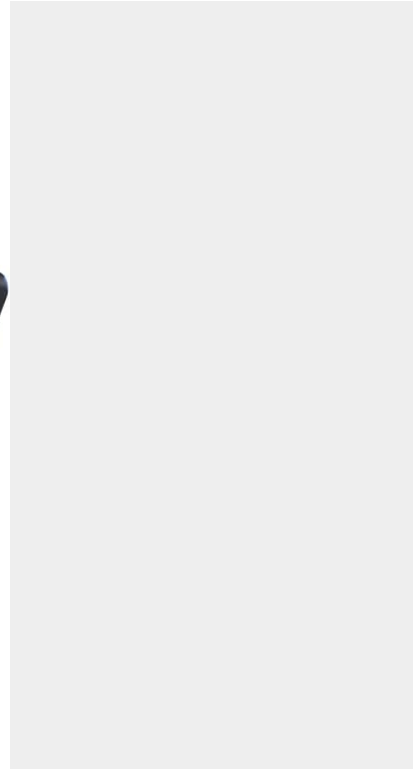
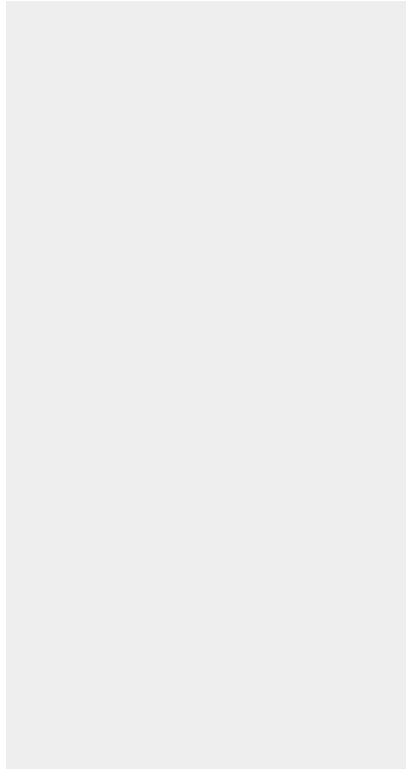




12-48V VARIABLE SPEED CONTROLLER

SKU: 12vcontrol1



Price: ~~\$99.00~~ \$94.05

Add to Cart

Categories: [12v - 24v Pumps](#), [Misc. Pump Products](#) |

SPECIFICATIONS

Weight	1 lbs
--------	-------

PRODUCT DESCRIPTION

Applicable voltage: DC 12-48V wide voltage, 25kHz PWM frequency;
 Applicable current: 20A rated/long-time working current, 40A maximum current, 1200W peak power;
 Multi-speed: Multi-speed stepless adjustment, 0-100% PWM output;
 Upgraded version: Support PLC control, equipped with Forward/Stop/Reverse switch;
 Attention: Only applicable to brushed motors, please use DC power supply and connect the positive and negative poles correctly, direct connection to AC power is strictly prohibited.

RELATED PRODUCTS



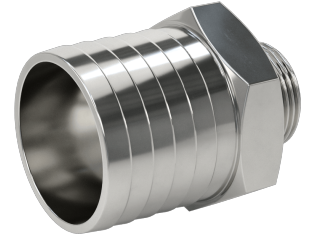
50Hz Portable Oil Transfer Pump - Massive Gears



Basic Oil Centrifuge



In Line Suction Strainer 1"



2" Hose Barb to 1" NPT Adapter Stainless

Since 2009, we have been supplying portable and stationary pumps for moving all types of oil. Oil cleaning centrifuges are also important tools to re-use oil as fuel or lubricant.

Contact Us:

2121 Natomas Crossing STE 200-218
Sacramento, CA 95835
1-888-959-9311
info@alternativefuelmecca.com

