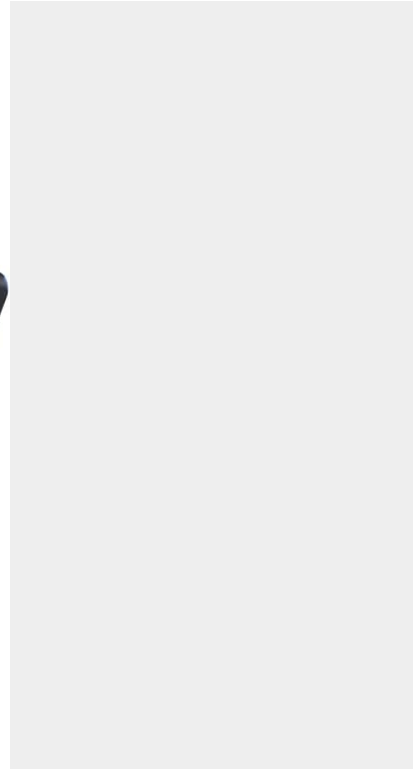
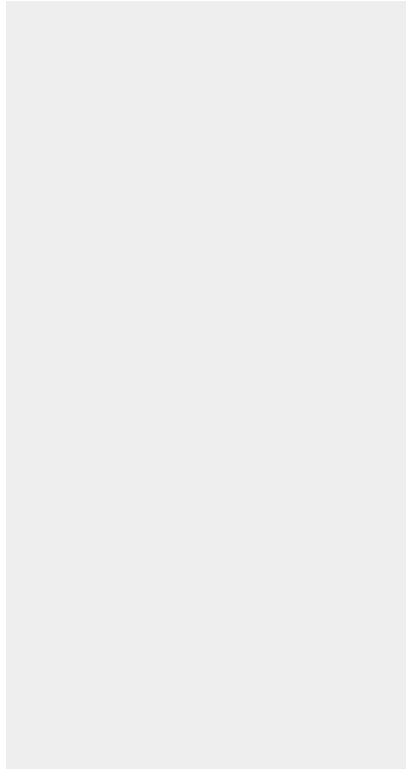




## 12-48V VARIABLE SPEED CONTROLLER

SKU: 12vcontrol1



Price: ~~\$99.00~~ \$94.05

Add to Cart

Categories: [12v - 24v Pumps](#), [Misc. Pump Products](#) |

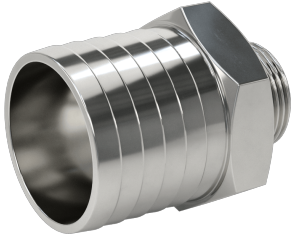
### SPECIFICATIONS

Weight	1 lbs
--------	-------

### PRODUCT DESCRIPTION

Applicable voltage: DC 12-48V wide voltage, 25kHz PWM frequency;  
 Applicable current: 20A rated/long-time working current, 40A maximum current, 1200W peak power;  
 Multi-speed: Multi-speed stepless adjustment, 0-100% PWM output;  
 Upgraded version: Support PLC control, equipped with Forward/Stop/Reverse switch;  
 Attention: Only applicable to brushed motors, please use DC power supply and connect the positive and negative poles correctly, direct connection to AC power is strictly prohibited.

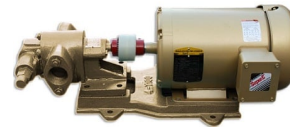
### RELATED PRODUCTS



**2" Hose Barb to 1"  
NPT Adapter  
Stainless**



**3HP VFD for 25GPM  
Pump Indoor**



**Industrial Oil  
Transfer Pump -  
25GPM - Single Phase**



**50Hz Portable Oil  
Transfer Pump -  
Massive Gears**

Since 2009, we have been supplying portable and stationary pumps for moving all types of oil. Oil cleaning centrifuges are also important tools to re-use oil as fuel or lubricant.

**Contact Us:**

2121 Natomas Crossing STE 200-218  
Sacramento, CA 95835  
1-888-959-9311  
[info@alternativefuelmecca.com](mailto:info@alternativefuelmecca.com)

