



## 30FT ALUMINUM CAMLOCK HOSE KIT

SKU: gs-hk2

### 30FT OIL SUCTION/ DISCHARGE HOSE KIT

#### COMPLETE KIT INCLUDES:

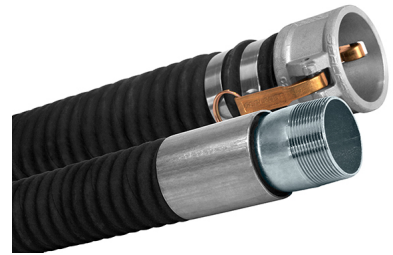
- 30FT OIL SUCTION/DISCHARGE HOSE
- 2 x TYPE F ALUMINUM CAMLOCK
- 2 x TYPE C ALUMINUM CAMLOCK
- 2 x TYPE E ALUMINUM CAMLOCK
- 2 x DP DUST PLUG
- 4 x END CAP
- 8 x HOSE CLAMP



Price: ~~\$389.00~~ \$369.55

Add to Cart

Categories: [Hose](#), [Misc. Pump Products](#) |



## SPECIFICATIONS

Weight	25 lbs
Dimensions	20 x 14 x 16 in

## PRODUCT DESCRIPTION

- High volume - 1.6 times the capacity of 1.25 inch hose!



- Tough for durability
- Farm Tank Transfer Hose
- Spiral wound to prevent collapse under high suction.
- Rugged long lasting aluminum locking fittings.
- Lightweight, for easy handling!
- Pump oil like a pro with 30' of suction hose and quick hose connectors.

**Suction Hose:** You get 30 feet of suction hose that has strong coils built in to prevent it from collapsing under vacuum. This is what you need to quickly suck up oil.

**Cam Locks** - You'll receive an array of male and female parts to arrange your hose accordingly. There are two sets of camlock males that come off the pump, two sets of camlock female connections on the hose end, and another two male connections. This also comes with end caps and plugs so the oil won't leak from the hose during movement.

2 x Type F

2 x Type C

2 x Type E

2 x DP Dust Plug

4 x End Cap

8 Hose Clamps

30' High Quality Suction/Discharge Petroleum Transfer Hose(custom lengths available, just ask for a quote)

*Depending on your application, you may also need pipe nipples and/or bushings, which are readily available at Home Depot, Lowes, Ace Hardware, and the like.*

## RELATED PRODUCTS



**Industrial Oil Transfer Pump - 25GPM - Single Phase**



**480V Oil Pump at 7GPM**



**3 Phase Gear Pump Motor - Brook Crompton**



**In Line Suction Strainer 1"**

Since 2009, we have been supplying portable and stationary pumps for moving all types of oil. Oil cleaning centrifuges are also important tools to re-use oil as fuel or lubricant.

### Contact Us:

2121 Natomas Crossing STE 200-218

Sacramento, CA 95835

1-888-959-9311

[info@alternativefuelmecca.com](mailto:info@alternativefuelmecca.com)

