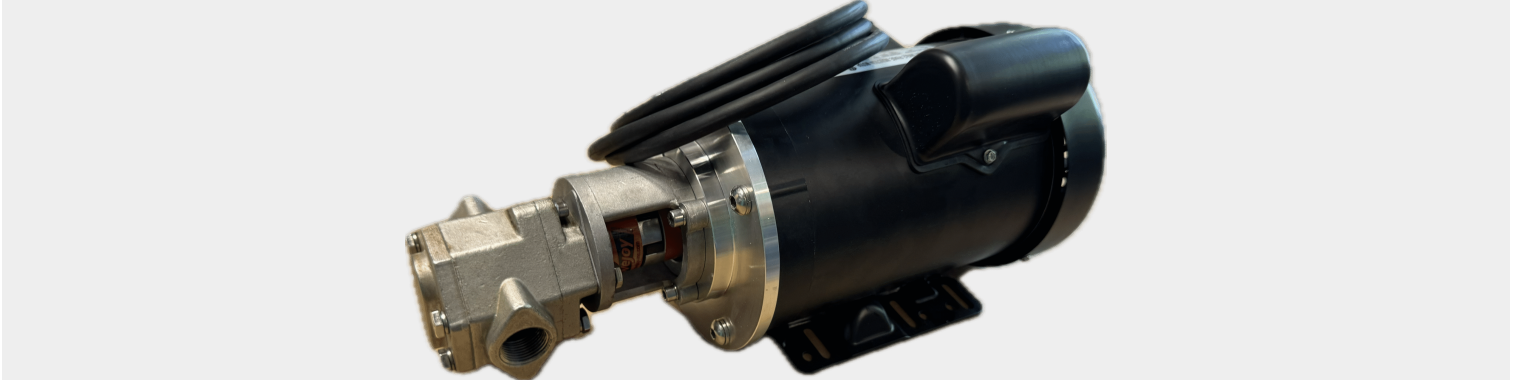




4GPM GEAR PUMP FOR OIL

SKU: gs4



Price: \$987.00 ~~\$937.65~~

Add to Cart

Categories: [Heavy Oil Pumps](#), [Oil Transfer Pumps](#) |

SPECIFICATIONS

Weight	50 lbs
Dimensions	20 x 14 x 16 in
Fluid	Heavy Oils like Gear Oil, Motor Oil
Voltage	120V, 230V, 460V, 3 Phase
Speed	4-7GPM

PRODUCT DESCRIPTION

Additional Specs:

*Dimensions: 17" long x 11" wide x 7" tall (43 cm x 28 cm x 18 cm)

*Weight: 45lbs

*Self Priming

*Suction Height: 15ft

*Push Lift Height: 90ft

***Reversible** - Rewire or add a switch to allow dual directional flow!

*Viton Seals

*B100 compatible

*Temperature Rating of 375°F

*Duty Cycle: Continuous

*Priming: Self priming

*4gpm, 1/2" NPT threaded ports

*Pump needs oil to lubricate the gears. Will not work with water.

Motor Specs

*Commercial Duty

*Output: 1HP



- *Speed: 1750 RPM
- *Volts: 120/230 or 3 Phase 480v
- *Hertz: 60
- *Shaft Size: 5/8"
- *Shaft Woodruff Key: 5 mm width x 5 mm deep x 16 mm length
- *Motor Base Mount: 4.5" Long x 6.56" Wide

Pumphead Specs

- *Bolt Pattern: 7 mm holes on a 85 mm circle
- *Shaft Size: 14 mm keyed shaft
- *Shaft Woodruff Key: 5 mm width x 5 mm deep x 12 mm length
- *Viton Seals
- *Self Priming
- *Cast Iron
- *1/2" NPT Ports
- *No Pressure Regulator

RELATED PRODUCTS



Industrial Oil Transfer Pump - 60GPM



Super HD Heavy Oil Transfer Pump



25GPM Portable Oil Transfer Pump - Massive Gears



24GPM 12V Oil Transfer Pump

Since 2009, we have been supplying portable and stationary pumps for moving all types of oil. Oil cleaning centrifuges are also important tools to re-use oil as fuel or lubricant.

Contact Us:

2121 Natomas Crossing STE 200-218

Sacramento, CA 95835

1-888-959-9311

info@alternativefuelmecca.com

