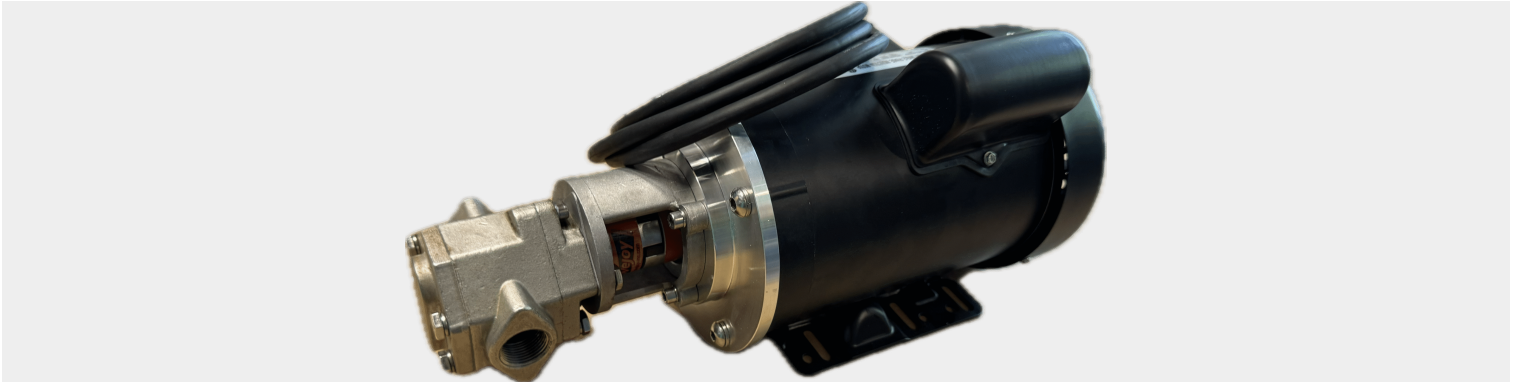




4GPM GEAR PUMP FOR OIL

SKU: gs4



Price: \$987.00 ~~\$937.65~~

Add to Cart

Categories: [Heavy Oil Pumps](#), [Oil Transfer Pumps](#) |

SPECIFICATIONS

Weight	50 lbs
Dimensions	20 x 14 x 16 in
Fluid	Heavy Oils like Gear Oil, Motor Oil
Voltage	120V, 230V, 460V, 3 Phase
Speed	4-7GPM

PRODUCT DESCRIPTION

Additional Specs:

*Dimensions: 17" long x 11" wide x 7" tall (43 cm x 28 cm x 18 cm)

*Weight: 45lbs

*Self Priming

*Suction Height: 15ft

*Push Lift Height: 90ft

***Reversible** - Rewire or add a switch to allow dual directional flow!

*Viton Seals

*B100 compatible

*Temperature Rating of 375°F

*Duty Cycle: Continuous

*Priming: Self priming

*4gpm, 1/2" NPT threaded ports

*Pump needs oil to lubricate the gears. Will not work with water.

Motor Specs

*Commercial Duty

*Output: 1HP



- *Speed: 1750 RPM
- *Volts: 120/230 or 3 Phase 480v
- *Hertz: 60
- *Shaft Size: 5/8"
- *Shaft Woodruff Key: 5 mm width x 5 mm deep x 16 mm length
- *Motor Base Mount: 4.5" Long x 6.56" Wide

Pumphead Specs

- *Bolt Pattern: 7 mm holes on a 85 mm circle
- *Shaft Size: 14 mm keyed shaft
- *Shaft Woodruff Key: 5 mm width x 5 mm deep x 12 mm length
- *Viton Seals
- *Self Priming
- *Cast Iron
- *1/2" NPT Ports
- *No Pressure Regulator

RELATED PRODUCTS



Industrial Oil Transfer Pump - 60GPM



480V Oil Pump 25GPM



480V Oil Pump at 12GPM



Oil Pump Hose Kit - 1.25 Inch

Since 2009, we have been supplying portable and stationary pumps for moving all types of oil. Oil cleaning centrifuges are also important tools to re-use oil as fuel or lubricant.

Contact Us:

2121 Natomas Crossing STE 200-218
Sacramento, CA 95835
1-888-959-9311
info@alternativefuelmecca.com

