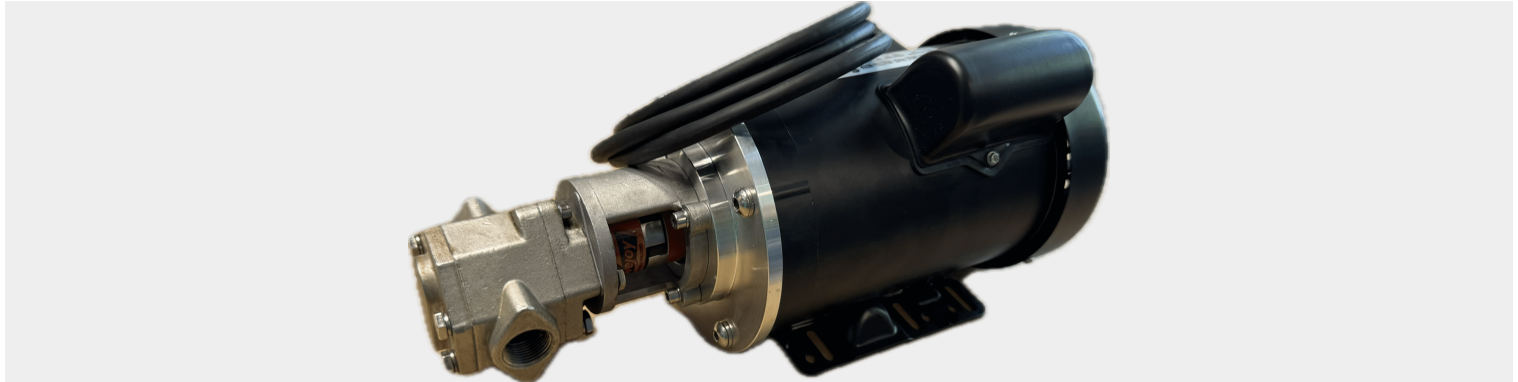




## 7GPM GEAR PUMP FOR OIL

SKU: gs7



Price: \$987.00 ~~\$937.65~~

Add to Cart

Categories: [Heavy Oil Pumps](#), [Oil Transfer Pumps](#) |

### SPECIFICATIONS

<b>Weight</b>	50 lbs
<b>Dimensions</b>	20 x 14 x 16 in
<b>Fluid</b>	Heavy Oils like Gear Oil, Motor Oil
<b>Voltage</b>	120V, 230V, 460V, 3 Phase
<b>Speed</b>	4-7GPM

### PRODUCT DESCRIPTION

#### Additional Specs:

\*Dimensions: 17" long x 11" wide x 7" tall (43 cm x 28 cm x 18 cm)

\*Weight: 45lbs

\*Self Priming

\*Suction Height: 15ft

\*Push Lift Height: 90ft

**\*Reversible** - Rewire or add a switch to allow dual directional flow!

\*Viton Seals

\*B100 compatible

\*Temperature Rating of 375°F

\*Duty Cycle: Continuous

\*Priming: Self priming

\*7gpm, 3/4" NPT threaded ports

\*Pump needs oil to lubricate the gears. Will not work with water.

#### Motor Specs

\*Commercial Duty

\*Output: 1HP



- \*Speed: 1750 RPM
- \*Volts: 120/230 or 3 Phase 480v
- \*Hertz: 60
- \*Shaft Size: 5/8"
- \*Shaft Woodruff Key: 5 mm width x 5 mm deep x 16 mm length
- \*Motor Base Mount: 4.5" Long x 6.56" Wide

**Pumphead Specs**

- \*Bolt Pattern: 7 mm holes on a 85 mm circle
- \*Shaft Size: 14 mm keyed shaft
- \*Shaft Woodruff Key: 5 mm width x 5 mm deep x 12 mm length
- \*Viton Seals
- \*Self Priming
- \*Cast Iron
- \*1/2" NPT Ports
- \*No Pressure Regulator

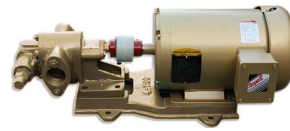
**RELATED PRODUCTS**



**HD Portable Oil Transfer Pump - Massive Gears**



**480V Oil Pump at 12GPM**



**Industrial Oil Transfer Pump - 25GPM -3 Phase**



**Portable Pumphead Replacement Gasket**

Since 2009, we have been supplying portable and stationary pumps for moving all types of oil. Oil cleaning centrifuges are also important tools to re-use oil as fuel or lubricant.

**Contact Us:**

2121 Natomas Crossing STE 200-218

Sacramento, CA 95835

1-888-959-9311

[info@alternativefuelmecca.com](mailto:info@alternativefuelmecca.com)

