



## **FAST DIESEL PUMP - 25GPM**

SKU: gs12-481



**Price:** ~~\$1,265.00~~ \$1,065.00

Add to Cart

Oil Pump for Demanding Applications

1HP Motor

No handle, switch or cord.

Categories: [Diesel Pumps](#), [Heavy Oil Pumps](#), [Light Oil Pumps](#) |

### **SPECIFICATIONS**

<b>Weight</b>	50 lbs
<b>Dimensions</b>	20 x 14 x 16 in
<b>Fluid</b>	Heavy Oils like Gear Oil, Motor Oil
<b>Voltage</b>	120V, 230V
<b>Speed</b>	12GPM

### **PRODUCT DESCRIPTION**

#### **Additional Specs:**

\*Dimensions: 17" long x 11" wide x 7" tall (43 cm x 28 cm x 18 cm)

\*Weight: 45lbs

\*Self Priming



- \*Suction Height: 15ft
- \*Push Lift Height: 90ft
- \*Reversible** - Rewire or add a switch to allow dual directional flow!
- \*Viton Seals
- \*B100 compatible
- \*Temperature Rating of 375°F
- \*Duty Cycle: Continuous
- \*Priming: Self priming
- \*25gpm(90 liters/min): 1" NPT threaded ports, 1.25" hose barbs
- \*Pump needs diesel or oil to lubricate cast iron gears. Will not work with water.

### **Motor Specs**

- \*Commercial Duty
- \*Output: 1 HP
- \*Speed: 3600 RPM
- \*Amps: 11.5 @ 120 volts, 5.8 @ 220 volts
- \*Hertz: 60
- \*Shaft Size: 5/8"
- \*Shaft Woodruff Key: 5 mm width x 5 mm deep x 16 mm length
- \*Motor Base Mount: 4.5" Long x 6.56" Wide

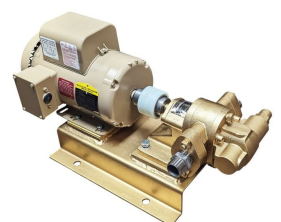
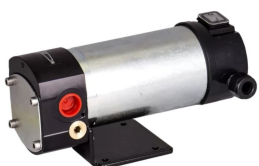
### **Pumphead Specs**

- \*Bolt Pattern: 7 mm holes on a 85 mm circle
- \*Shaft Size: 14 mm keyed shaft
- \*Shaft Woodruff Key: 5 mm width x 5 mm deep x 12 mm length
- \*Viton Seals
- \*Self Priming
- \*Cast Iron
- \*1" NPT Ports
- \*Stainless Steel 1.25" Hose Barbs Included (fits 1.25" hose kit)
- \*No Pressure Regulator

### **Coupling Specs**

- \*Pump Coupling: 5/8"
- \*Motor Coupling: 14 mm
- \*Size: C
- \*Overall Length: 1 63/64"
- \*Hub Diameter: 1 23/64"
- \*Bore Depth: 1 3/4"
- \*Screw Size: 1/4"-20
- \*Spider Element: Buna-N 27/64"

## **RELATED PRODUCTS**





**12V Oil Transfer  
Pump 3GPM**

**480V Oil Pump at  
12GPM**

**230V Oil Pump  
25GPM - 2HP**

**Industrial 8GPM with  
Bypass**

Since 2009, we have been supplying portable and stationary pumps for moving all types of oil. Oil cleaning centrifuges are also important tools to re-use oil as fuel or lubricant.

**Contact Us:**

2121 Natomas Crossing STE 200-218

Sacramento, CA 95835

1-888-959-9311

[info@alternativefuelmecca.com](mailto:info@alternativefuelmecca.com)

