



FAST DIESEL PUMP - 25GPM

SKU: gs12-481



Price: ~~\$1,265.00~~ \$1,065.00

Add to Cart

Oil Pump for Demanding Applications

1HP Motor

No handle, switch or cord.

Categories: [Diesel Pumps](#), [Heavy Oil Pumps](#), [Light Oil Pumps](#) |

SPECIFICATIONS

Weight	50 lbs
Dimensions	20 x 14 x 16 in
Fluid	Heavy Oils like Gear Oil, Motor Oil
Voltage	120V, 230V
Speed	12GPM

PRODUCT DESCRIPTION

Additional Specs:

*Dimensions: 17" long x 11" wide x 7" tall (43 cm x 28 cm x 18 cm)

*Weight: 45lbs

*Self Priming



- *Suction Height: 15ft
- *Push Lift Height: 90ft
- *Reversible** - Rewire or add a switch to allow dual directional flow!
- *Viton Seals
- *B100 compatible
- *Temperature Rating of 375°F
- *Duty Cycle: Continuous
- *Priming: Self priming
- *25gpm(90 liters/min): 1" NPT threaded ports, 1.25" hose barbs
- *Pump needs diesel or oil to lubricate cast iron gears. Will not work with water.

Motor Specs

- *Commercial Duty
- *Output: 1 HP
- *Speed: 3600 RPM
- *Amps: 11.5 @ 120 volts, 5.8 @ 220 volts
- *Hertz: 60
- *Shaft Size: 5/8"
- *Shaft Woodruff Key: 5 mm width x 5 mm deep x 16 mm length
- *Motor Base Mount: 4.5" Long x 6.56" Wide

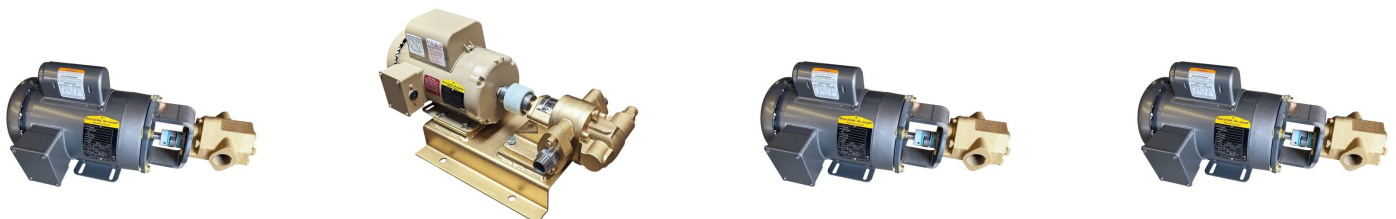
Pumphead Specs

- *Bolt Pattern: 7 mm holes on a 85 mm circle
- *Shaft Size: 14 mm keyed shaft
- *Shaft Woodruff Key: 5 mm width x 5 mm deep x 12 mm length
- *Viton Seals
- *Self Priming
- *Cast Iron
- *1" NPT Ports
- *Stainless Steel 1.25" Hose Barbs Included (fits 1.25" hose kit)
- *No Pressure Regulator

Coupling Specs

- *Pump Coupling: 5/8"
- *Motor Coupling: 14 mm
- *Size: C
- *Overall Length: 1 63/64"
- *Hub Diameter: 1 23/64"
- *Bore Depth: 1 3/4"
- *Screw Size: 1/4"-20
- *Spider Element: Buna-N 27/64"

RELATED PRODUCTS





**2HP Heavy Oil
Portable Pump
25GPM**

**Industrial 10GPM
with Bypass 480V**

**230V 3 Phase Oil
Pump 12GPM - 1HP**

**4GPM Gear Pump for
Oil**

Since 2009, we have been supplying portable and stationary pumps for moving all types of oil. Oil cleaning centrifuges are also important tools to re-use oil as fuel or lubricant.

Contact Us:

2121 Natomas Crossing STE 200-218
Sacramento, CA 95835
1-888-959-9311
info@alternativefuelmecca.com

