



FRYER OIL CIRCULATION PUMP

SKU: fopi34



Price: \$595.00

[Add to Cart](#)

4 Gallons/Minute(15l)

3/4HP Motor

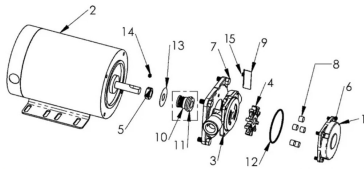
2.5m Head pressure

1/2" Ports

29lbs

15"x10x10.5

Categories: [Oil Transfer Pumps](#) |



SPECIFICATIONS

Weight	25 lbs
Dimensions	20 x 18 x 18 in
Fluid	Diesel or Light Oils



Speed	4-7GPM
Voltage	120V, 230V



PRODUCT DESCRIPTION

Introducing the AFM Frying Oil Pump – the epitome of innovation for the service industry. Crafted with precision and efficiency in mind, this self-priming, positive displacement pump boasts a robust construction of cast-iron, ensuring durability even in high-temperature environments.

Designed specifically for hot oil or frying oil filtration with a capability of handling temperatures up to 375°F, our pump proudly meets NSF-listing requirements. It's the ideal companion for a diverse range of commercial fat fryer applications, offering impeccable performance in hot oil cooking, filtering, and waste oil rendering.

Key Features:

- **NSF-Listed Excellence:** Our pumps adhere to NSF-listed standards, including NSF-accepted paint tailored for hot oil cooking applications, ensuring compliance with industry regulations. CE motor

- **Versatile Operation:** Experience the flexibility of bi-directional operation, allowing seamless integration into various processes.

- **Powerful Performance:** With the ability to handle pressures up to 40 PSI (configurable motors) and flow rates reaching 8.2 gallons per minute, this pump delivers unparalleled performance.

- **High-Temperature Resilience:** Operating temperatures up to 375°F make this pump a reliable choice for demanding environments.

- **Efficient Design:** The non-clogging Teflon roller design ensures smooth and hassle-free operation, while suction lift capabilities reach up to 7.5 feet of head.

- **Application Versatility:** While perfect for NSF hot oil applications, this pump is also suitable for non-NSF hot oil scenarios involving non-particulate and non-abrasive fluids compatible with its construction materials.

- **Safety Assured:** AC ODP single-phase motors come equipped with thermal overload protection, providing an added layer of safety.

- **Flexible Installation:** Ports can be conveniently rotated either vertically or horizontally to suit your specific setup.

Please note that the AFM Frying Oil Pump is not intended for use with water-based fluids. Elevate your restaurants with a pump designed for reliability, efficiency, and compliance.

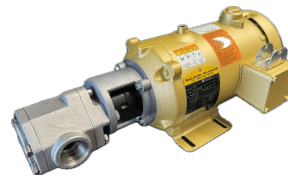
RELATED PRODUCTS



[230V Oil Pump](#)
[25GPM - 2HP](#)



[Super HD Heavy](#)
[Oil Transfer Pump](#)



[Stainless Steel](#)
[12GPM Oil](#)
[Transfer Pump](#)



[Oil Pump Hose Kit](#)
[- 1.25 Inch](#)

Since 2009, we have been supplying portable and stationary pumps for moving all types of oil. Oil cleaning centrifuges are also important tools to re-use oil as fuel or lubricant.

Contact Us:

2121 Natomas Crossing STE 200-218

Sacramento, CA 95835

1-888-959-9311



info@alternativefuelmecca.com

