



GAS MOTOR PLATE ADAPTER

SKU: adapt1



Price: ~~\$345.00~~ \$327.75

Add to Cart

Mounts our portable oil transfer pumphead to a gas motor. Harbor freight motors and more!

Categories: [Misc. Pump Products](#) |

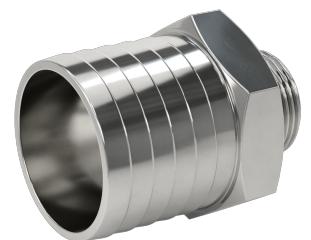
SPECIFICATIONS

Weight	10 lbs
--------	--------

PRODUCT DESCRIPTION

The mount is designed to fit engines with a bolt circle of 3 5/8" (92 mm) and includes mounting hardware.

RELATED PRODUCTS





**In Line Suction
Strainer 1"**

**480V Oil Pump at
7GPM**

**2" Hose Barb to 1"
NPT Adapter
Stainless**



**Extreme Oil
Centrifuge**

Since 2009, we have been supplying portable and stationary pumps for moving all types of oil. Oil cleaning centrifuges are also important tools to re-use oil as fuel or lubricant.

Contact Us:

2121 Natomas Crossing STE 200-218
Sacramento, CA 95835
1-888-959-9311
info@alternativefuelmecca.com

