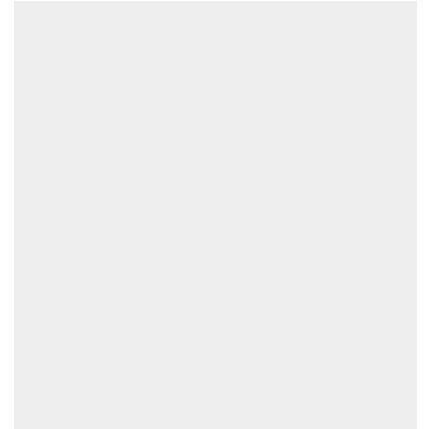
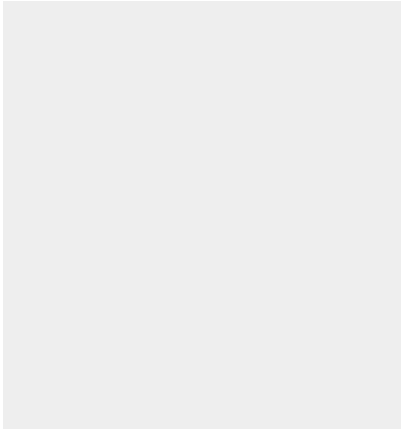




GATES PLANT MASTER XTREME PETROLEUM HOSE

SKU: gh125



Price: ~~\$9.00~~ \$8.55

Add to Cart

Hose for suction and dispensing of oil, fuel oils, air and water.

Sold Per Foot

Call for shipping quote

Camlocks Available!

Categories: [Hose](#) |

SPECIFICATIONS

PRODUCT DESCRIPTION

PLANT MASTER™ XTREME™ 250 — 1-1/4" GENERAL-PURPOSE HOSE

A flexible, oil-resistant multipurpose hose built for demanding plant and shop service. The Plant Master™ Xtreme™ 250 handles air, water, petroleum-based oils, and lubricants with excellent weather/ozone durability, making it a dependable choice for general industrial transfer. Recommended for petrol, kerosene, and fuel-oil transfer (observe temperature guidance below). ([Gates](#))

QUICK HIGHLIGHTS

- **Working pressure:** 250 psi (1.72 MPa / 17 bar) with 3:1 design factor.
- **Temperature range:** -40°F to +212°F (-40°C to +100°C) in continuous service; fuels recommended to +120°F max.
- **Oil resistance:** Tube rated **ARPM Class A** (high oil resistance).
- **Non-conductive:** > 1 MΩ per inch when new* (see note on storage/use).
- **Excellent flexibility and weather/ozone resistance.**

*Electrical resistance can change with storage and use; verify in your application.

TYPICAL USES

- General plant service for **air, water, and multi-purpose transfer**
- **Petroleum oils and lubricants** handling
- **Fuel transfer** (petrol, kerosene, fuel oil) — observe +120°F fuel limit



CONSTRUCTION

- **Tube:** Nitrile (NBR), **ARPM Class A** oil resistance, black.
- **Reinforcement:** Synthetic textile braid.
- **Cover:** Modified nitrile, **ARPM Class B**; red, standard cover, weather/ozone resistant.

PERFORMANCE & RATINGS

- **Max working pressure:** 250 psi (17 bar / 1.72 MPa)
- **Min burst pressure:** 900 psi
- **Vacuum rating:** 10 in Hg
- **Min bend radius:** 9.84 in (250 mm)
- **Temperature range:** -40°F to +212°F (-40°C to +100°C) continuous
- **Electrical:** Non-conductive > 1 MΩ per inch when new*
- **Design factor:** 3:1 (working : burst)

*Storage and use may adversely affect electrical resistance. Verify before use where non-conductivity is critical.

DIMENSIONS (THIS VARIANT)

- **Inside diameter:** 1.25 in (31.8–32 mm)
- **Outside diameter:** 1.75 in (~44.5 mm)
- **Standard length:** 300 ft (91 m)
- **Approx. weight:** ~1.0 lb per foot (as listed per pack; verify before freight calculations)

PART & IDENTIFICATION

- **Product family:** Plant Master™ Xtreme™ 250
- **Description:** PLANT MAS XTRM 250 1-1/4" x RL91 (300 ft)
- **Product # (Gates):** 3205-00049
- **Part # (label):** 1-1/4X300 PLANT XTREME 250
- **UPC:** 072053662849 ([Gates](#))

COUPLING GUIDANCE

Compatible with long-shank styles, Tri-Lokt, interlocking (ground-joint and washer-joint), Power Crimp™ couplings, and GLX® (G44 Series). Always verify assembly compatibility and pressure ratings by size.

COMPLIANCE / NOTES

- **ARPM ratings:** Tube Class A (high oil resistance); Cover Class B.
- **Non-conductive** as manufactured; confirm in service due to possible change with age, storage, and media.
- **Fuel transfer** recommendation to +120°F max.
- Images on the original page are illustrative and may not represent exact product markings.

CLEAN SPEC BLOCK (COPY-PASTE FRIENDLY)

Plant Master™ Xtreme™ 250 — 1-1/4" (ID) General-Purpose Hose, 300 ft

- **Pressure:** 250 psi WP (17 bar); 900 psi minimum burst; 3:1 design factor
- **Vacuum:** 10 in Hg
- **Temp:** -40°F to +212°F (-40°C to +100°C) continuous; fuels to **+120°F**
- **ID/OD:** 1.25 in (31.8–32 mm) / 1.75 in (44.5 mm)
- **Bend radius:** 9.84 in (250 mm)
- **Tube:** NBR, ARPM Class A, black
- **Reinforcement:** Synthetic textile
- **Cover:** Modified Nitrile, ARPM Class B, red, weather/ozone resistant
- **Electrical:** Non-conductive >1 MΩ/in (as new); verify before use
- **Length:** 300 ft (91 m)
- **Weight:** ~1.0 lb/ft (per pack listing)
- **Part/UPC:** 3205-00049 / 072053662849
- **Couplings:** Long-shank, Tri-Lokt, interlocking (ground-/washer-joint), Power Crimp™, GLX® (G44)
- **Applications:** Air, water, oils & lubricants; petrol/kerosene/fuel-oil transfer (to +120°F)
- **Color:** Red cover / black tube

If you want, I can also:

- Convert this into a **WordPress product page** (HTML block with schema.org Product markup).
- Add a **comparison table** vs. your own hose SKU.
- Generate a **cut-sheet PDF** with your branding and these specs.

RELATED PRODUCTS



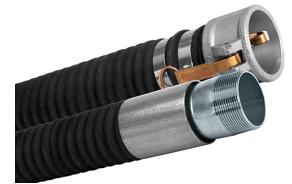
30ft Aluminum Camlock Hose Kit



Oil Pump Hose Kit - 1.25 Inch



Hose Reel for Oil Transfer Hose



Fuel and Oil Tank Transfer Hose 1.5"

Since 2009, we have been supplying portable and stationary pumps for moving all types of oil. Oil cleaning centrifuges are also important tools to re-use oil as fuel or lubricant.

Contact Us:

2121 Natomas Crossing STE 200-218

Sacramento, CA 95835

1-888-959-9311

info@alternativefuelmecca.com

