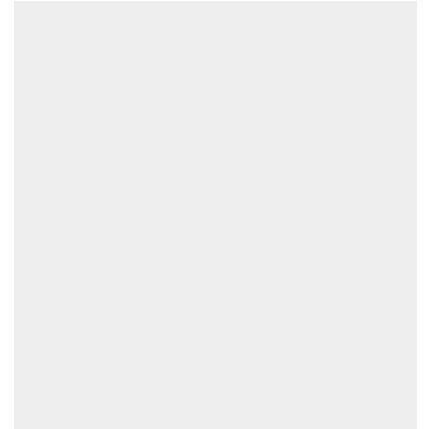
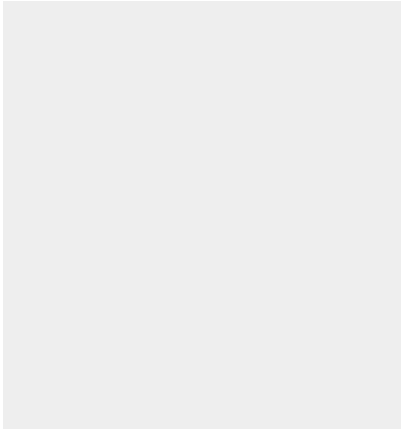




GATES PLANT MASTER XTREME PETROLEUM HOSE

SKU: gh125



Price: ~~\$9.00~~ \$8.55

Add to Cart

Hose for suction and dispensing of oil, fuel oils, air and water.

Sold Per Foot

Call for shipping quote

Camlocks Available!

Categories: [Hose](#) |

SPECIFICATIONS

PRODUCT DESCRIPTION

PLANT MASTER™ XTREME™ 250 — 1-1/4" GENERAL-PURPOSE HOSE

A flexible, oil-resistant multipurpose hose built for demanding plant and shop service. The Plant Master™ Xtreme™ 250 handles air, water, petroleum-based oils, and lubricants with excellent weather/ozone durability, making it a dependable choice for general industrial transfer. Recommended for petrol, kerosene, and fuel-oil transfer (observe temperature guidance below). ([Gates](#))

QUICK HIGHLIGHTS

- **Working pressure:** 250 psi (1.72 MPa / 17 bar) with 3:1 design factor.
- **Temperature range:** -40°F to +212°F (-40°C to +100°C) in continuous service; fuels recommended to +120°F max.
- **Oil resistance:** Tube rated **ARPM Class A** (high oil resistance).
- **Non-conductive:** > 1 MΩ per inch when new* (see note on storage/use).
- **Excellent flexibility and weather/ozone resistance.**

*Electrical resistance can change with storage and use; verify in your application.

TYPICAL USES

- General plant service for **air, water, and multi-purpose transfer**
- **Petroleum oils and lubricants** handling
- **Fuel transfer** (petrol, kerosene, fuel oil) — observe +120°F fuel limit



CONSTRUCTION

- **Tube:** Nitrile (NBR), **ARPM Class A** oil resistance, black.
- **Reinforcement:** Synthetic textile braid.
- **Cover:** Modified nitrile, **ARPM Class B**; red, standard cover, weather/ozone resistant.

PERFORMANCE & RATINGS

- **Max working pressure:** 250 psi (17 bar / 1.72 MPa)
- **Min burst pressure:** 900 psi
- **Vacuum rating:** 10 in Hg
- **Min bend radius:** 9.84 in (250 mm)
- **Temperature range:** -40°F to +212°F (-40°C to +100°C) continuous
- **Electrical:** Non-conductive > 1 MΩ per inch when new*
- **Design factor:** 3:1 (working : burst)

*Storage and use may adversely affect electrical resistance. Verify before use where non-conductivity is critical.

DIMENSIONS (THIS VARIANT)

- **Inside diameter:** 1.25 in (31.8–32 mm)
- **Outside diameter:** 1.75 in (~44.5 mm)
- **Standard length:** 300 ft (91 m)
- **Approx. weight:** ~1.0 lb per foot (as listed per pack; verify before freight calculations)

PART & IDENTIFICATION

- **Product family:** Plant Master™ Xtreme™ 250
- **Description:** PLANT MAS XTRM 250 1-1/4" x RL91 (300 ft)
- **Product # (Gates):** 3205-00049
- **Part # (label):** 1-1/4X300 PLANT XTREME 250
- **UPC:** 072053662849 ([Gates](#))

COUPLING GUIDANCE

Compatible with long-shank styles, Tri-Lokt, interlocking (ground-joint and washer-joint), Power Crimp™ couplings, and GLX® (G44 Series). Always verify assembly compatibility and pressure ratings by size.

COMPLIANCE / NOTES

- **ARPM ratings:** Tube Class A (high oil resistance); Cover Class B.
- **Non-conductive** as manufactured; confirm in service due to possible change with age, storage, and media.
- **Fuel transfer** recommendation to +120°F max.
- Images on the original page are illustrative and may not represent exact product markings.

CLEAN SPEC BLOCK (COPY-PASTE FRIENDLY)

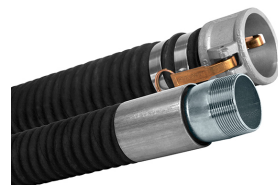
Plant Master™ Xtreme™ 250 — 1-1/4" (ID) General-Purpose Hose, 300 ft

- **Pressure:** 250 psi WP (17 bar); 900 psi minimum burst; 3:1 design factor
- **Vacuum:** 10 in Hg
- **Temp:** -40°F to +212°F (-40°C to +100°C) continuous; fuels to **+120°F**
- **ID/OD:** 1.25 in (31.8–32 mm) / 1.75 in (44.5 mm)
- **Bend radius:** 9.84 in (250 mm)
- **Tube:** NBR, ARPM Class A, black
- **Reinforcement:** Synthetic textile
- **Cover:** Modified Nitrile, ARPM Class B, red, weather/ozone resistant
- **Electrical:** Non-conductive >1 MΩ/in (as new); verify before use
- **Length:** 300 ft (91 m)
- **Weight:** ~1.0 lb/ft (per pack listing)
- **Part/UPC:** 3205-00049 / 072053662849
- **Couplings:** Long-shank, Tri-Lokt, interlocking (ground-/washer-joint), Power Crimp™, GLX® (G44)
- **Applications:** Air, water, oils & lubricants; petrol/kerosene/fuel-oil transfer (to +120°F)
- **Color:** Red cover / black tube

If you want, I can also:

- Convert this into a **WordPress product page** (HTML block with schema.org Product markup).
- Add a **comparison table** vs. your own hose SKU.
- Generate a **cut-sheet PDF** with your branding and these specs.

RELATED PRODUCTS



30ft Aluminum Camlock Hose Kit

Fuel and Oil Tank Transfer Hose 1.5"

Hose Reel for Oil Transfer Hose

Oil Pump Vacuum Hose - 1.25 Inch

Since 2009, we have been supplying portable and stationary pumps for moving all types of oil. Oil cleaning centrifuges are also important tools to re-use oil as fuel or lubricant.

Contact Us:

2121 Natomas Crossing STE 200-218

Sacramento, CA 95835

1-888-959-9311

info@alternativefuelmecca.com

