



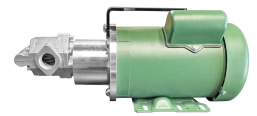
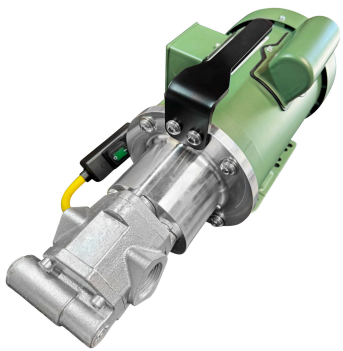
## **HD MEAN GREEN OIL PUMP - 20GPM**

**SKU:** IC-20-120-FD-1.5



**Price:** \$1,157.00

**Categories:** [Heavy Oil Pumps](#), [Oil Transfer Pumps](#), [Stainless Pumps](#) |



## **SPECIFICATIONS**

<b>Weight</b>	55 lbs
<b>Dimensions</b>	20 x 14 x 16 in
<b>Fluid</b>	Diesel or Light Oils, Heavy Oils like Gear Oil, Motor Oil
<b>Speed</b>	12GPM
<b>Voltage</b>	120V, 230V



## PRODUCT DESCRIPTION

### ☐ **MOVE THICK FLUIDS FAST - NOW WITH A 1.5 HP FARM DUTY MOTOR!** ☐

In a professional shop, every minute counts. Slow oil transfers don't just waste time—they impact your bottom line, delay job completion, and keep customers waiting. That's revenue walking out your door.

**Introducing the Heavy Duty 20 GPM Portable Oil Transfer Pump** — now powered by a rugged **1 HP Farm Duty motor** for superior performance and durability. This industrial powerhouse revolutionizes your oil transfer process.

Since 2009, Alternative Fuel Mecca has been supplying professional-grade equipment to shops nationwide. We understand the demands of daily operations, and we build pumps to keep up.

### ☐ **WHAT YOU GET**

- **Best Portable Pump for Viscous Fluids:** Transfer 20 **gallons per minute** (empty a 55-gallon drum in ~2.5 minutes)
- **Pump from a Distance:** Self-priming design for immediate pumping. Suction lift is 15' and push height is 90'.
- **Industrial Durability:** Built for professional daily use
- **Long-Term Reliability:** Motor is built to last. Easy seal replacement and servicing.
- **Professional Technical Assistance** and Extended Warranty Option

## ⚙️ **DETAILED SPECIFICATIONS**

### **Overall Specs**

- Dimensions: 17" × 11" × 7"
- Weight: 50 lbs
- Temperature Rating: Up to 375 °F
- Flow Rate: 20 **GPM (heavy duty, thick fluids)**
- Ports: 1" NPT with hose barbs or cam-lock quick connects.
- Seals: **Viton** (B100 biodiesel compatible)
- Self-priming design with **reversible flow**

### **Pumphead Specs**

- 1.5" NPT Female Ports
- 1.5" Threaded Barbed Adapters or Tri Clamp
- Close Coupled gears
- No bypass for heavy oils
- Stainless or Cast Iron
- 1 gasket and 1 viton seal(on shaft)
- 14mm shaft
- Includes oversized Lovejoy L075 spider couplings

### **Motor Specs**

- Power: 1.5 **HP, single-phase Motor**
- Voltage: **115/230 V**, 60 Hz (dual voltage ready)
- RPM: **1,725–1,800 RPM** for steady torque under load
- 14.5A @120V, 7.3A@230V



- Enclosure: **TEFC (Totally Enclosed Fan Cooled), IP54** dust & water resistant
- Insulation: **Class F, VPI impregnated windings** for heat & moisture resistance
- Shaft & Bearings: **14 mm keyed shaft, double-sealed ball bearings**, with improved drive-end seal
- Service Factor: **1.15**, handles overloads with ease
- Starting: **Capacitor start / induction run** for strong startup torque
- Corrosion Resistance: **Anti-rust rotor coating** for extended lifespan
- Farm Duty 1.5HP industrial motor
- 6.5 amp draw
- Pre-wired with water resistant switch and 3-prong power cord
- Thermally protected with Manual Override

---

## □ INVESTMENT

- Heavy-duty **1.5HP TEFC motor** with Viton seals
- B100 biodiesel compatibility
- Reversible flow capability
- 1" ports with stainless barbs
- Continuous duty rating
- Comprehensive warranty + professional tech support

**ROI:** Save 10–30 minutes per transfer. Across multiple jobs daily, that's significant labor cost savings and increased throughput.

---

## □ COMPATIBILITY

### Ideal for:

- Motor Oil
- Waste Motor Oil (WMO)
- Gear Oil
- Hydraulic Fluid

### Not for:

- Water
- Highly aqueous solutions
- Highly flammable liquids

---

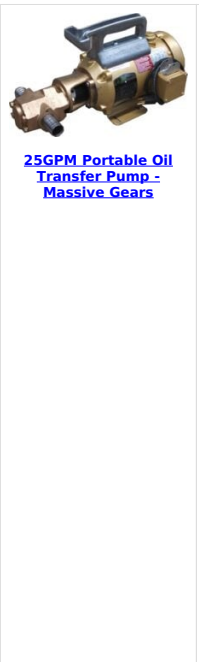
## □ POWER REQUIREMENTS

- Standard 20 amp residential outlet

---

□ **Add to Cart Now** and take control of your oil transfer process with professional-grade speed, reliability, and power.

## RELATED PRODUCTS



Since 2009, we have been supplying portable and stationary pumps for moving all types of oil. Oil cleaning centrifuges are also important tools to re-use oil as fuel or lubricant.

**Contact Us:**

2121 Natomas Crossing STE 200-218  
Sacramento, CA 95835  
1-888-959-9311  
[info@alternativefuelmecca.com](mailto:info@alternativefuelmecca.com)

