



HD OIL TRANSFER PUMP WITH BYPASS - 8GPM

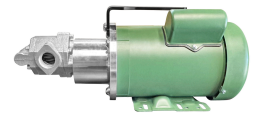
SKU: MG-HD-7



Price: ~~\$1,157.00~~ \$1,099.15

Add to Cart

Categories: [Heavy Oil Pumps](#), [Light Oil Pumps](#), [Oil Transfer Pumps](#), [Stainless Pumps](#) |



SPECIFICATIONS

Weight	55 lbs
Dimensions	20 x 14 x 16 in
Fluid	Diesel or Light Oils, Heavy Oils like Gear Oil, Motor Oil
Speed	4-7GPM
Voltage	120V, 230V



PRODUCT DESCRIPTION

WHAT YOU GET

- **Best Portable Pump for Viscous Fluids:** Transfer 8 **gallons per minute**
- **Pump from a Distance:** Self-priming design for immediate pumping. Suction lift is 15' and push height is 90'.
- **Industrial Durability:** Built for professional daily use
- **Long-Term Reliability:** Motor is built to last. Easy seal replacement and servicing.
- **Professional Technical Assistance** and Extended Warranty Option

DETAILED SPECIFICATIONS

Overall Specs

- Dimensions: 17" × 11" × 7"
- Weight: 35 lbs
- Temperature Rating: Up to 375 °F
- Flow Rate: 7-8 **GPM**
- Ports: .75" NPT with hose barbs or cam-lock quick connects.
- Seals: **Viton** (B100 biodiesel compatible)
- Self-priming design with **reversible flow**

Pumphead Specs

- .75" NPT Female Ports
- Close Coupled gears
- No bypass for heavy oils
- Stainless or Cast Iron
- 1 gasket and 1 viton seal(on shaft)
- 14mm shaft
- Includes oversized Lovejoy L075 spider couplings

Motor Specs

- Power: 3/4 **HP, single-phase Motor**
- Voltage: **115/230 V**, 60 Hz (dual voltage ready)
- RPM: **1,725-1,800 RPM** for steady torque under load
- Enclosure: **TEFC (Totally Enclosed Fan Cooled), IP54** dust & water resistant
- Insulation: **Class F, VPI impregnated windings** for heat & moisture resistance
- Shaft & Bearings: **14 mm keyed shaft, double-sealed ball bearings**, with improved drive-end seal
- Service Factor: **1.15**, handles overloads with ease
- Starting: **Capacitor start / induction run** for strong startup torque
- Corrosion Resistance: **Anti-rust rotor coating** for extended lifespan
- Farm Duty 3/4HP industrial motor
- 6.5 amp draw
- Pre-wired with water resistant switch and 3-prong power cord
- Thermally protected with Manual Override

INVESTMENT

- Heavy-duty 1 **HP TEFC motor** with Viton seals
- B100 biodiesel compatibility



- Reversible flow capability
- 3" ports with stainless barbs
- Continuous duty rating
- Comprehensive warranty + professional tech support

ROI: Save 10–30 minutes per transfer. Across multiple jobs daily, that's significant labor cost savings and increased throughput.

COMPATIBILITY

Ideal for:

- Motor Oil
- Waste Motor Oil (WMO)
- Gear Oil
- Hydraulic Fluid

Not for:

- Water
- Highly aqueous solutions
- Highly flammable liquids

POWER REQUIREMENTS

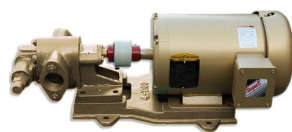
- Standard 15 amp residential outlet
- Generator: 3,000 W continuous / 3,500 W peak
- 12 V Inverter: 5,000 W continuous / 6,000 W peak

Add to Cart Now and take control of your oil transfer process with professional-grade speed, reliability, and power.

RELATED PRODUCTS



HD Portable Oil Transfer Pump - Massive Gears



Industrial Oil Transfer Pump - 25GPM -3 Phase



Food Grade Stainless Oil Circulating Pump 2GPM



Portable Oil Transfer Pump Reversible Switch

Since 2009, we have been supplying portable and stationary pumps for moving all types of oil. Oil cleaning centrifuges are also important tools to re-use oil as fuel or lubricant.

Contact Us:

2121 Natomas Crossing STE 200-218



Alternative Fuel Mecca

2121 Natomas Crossing STE 200-218

Sacramento, CA 95835

1-888-959-9311

info@alternativefuelmecca.com

Sacramento, CA 95835

1-888-959-9311

info@alternativefuelmecca.com

