



## HD OIL TRANSFER PUMP WITH BYPASS - 8GPM

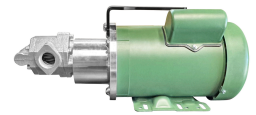
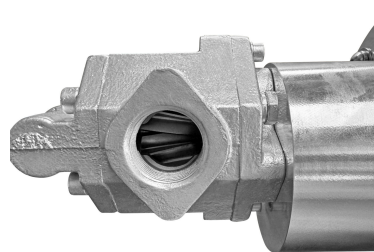
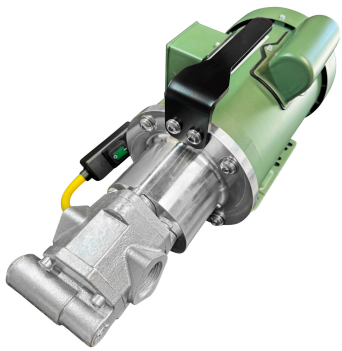
SKU: MG-HD-7



Price: \$1,157.00

Add to Cart

Categories: [Heavy Oil Pumps](#), [Light Oil Pumps](#), [Oil Transfer Pumps](#), [Stainless Pumps](#) |



## SPECIFICATIONS

<b>Weight</b>	55 lbs
<b>Dimensions</b>	20 x 14 x 16 in
<b>Fluid</b>	Diesel or Light Oils, Heavy Oils like Gear Oil, Motor Oil
<b>Speed</b>	4-7GPM
<b>Voltage</b>	120V, 230V



---

## PRODUCT DESCRIPTION

### WHAT YOU GET

- **Best Portable Pump for Viscous Fluids:** Transfer 8 **gallons per minute**
- **Pump from a Distance:** Self-priming design for immediate pumping. Suction lift is 15' and push height is 90'.
- **Industrial Durability:** Built for professional daily use
- **Long-Term Reliability:** Motor is built to last. Easy seal replacement and servicing.
- **Professional Technical Assistance** and Extended Warranty Option

---

## DETAILED SPECIFICATIONS

### Overall Specs

- Dimensions: 17" × 11" × 7"
- Weight: 35 lbs
- Temperature Rating: Up to 375 °F
- Flow Rate: 7-8 **GPM**
- Ports: .75" NPT with hose barbs or cam-lock quick connects.
- Seals: **Viton** (B100 biodiesel compatible)
- Self-priming design with **reversible flow**

### Pumphead Specs

- .75" NPT Female Ports
- Close Coupled gears
- No bypass for heavy oils
- Stainless or Cast Iron
- 1 gasket and 1 viton seal(on shaft)
- 14mm shaft
- Includes oversized Lovejoy L075 spider couplings

### Motor Specs

- Power: 3/4 **HP, single-phase Motor**
- Voltage: **115/230 V**, 60 Hz (dual voltage ready)
- RPM: **1,725-1,800 RPM** for steady torque under load
- Enclosure: **TEFC (Totally Enclosed Fan Cooled), IP54** dust & water resistant
- Insulation: **Class F, VPI impregnated windings** for heat & moisture resistance
- Shaft & Bearings: **14 mm keyed shaft, double-sealed ball bearings**, with improved drive-end seal
- Service Factor: **1.15**, handles overloads with ease
- Starting: **Capacitor start / induction run** for strong startup torque
- Corrosion Resistance: **Anti-rust rotor coating** for extended lifespan
- Farm Duty 3/4HP industrial motor
- 6.5 amp draw
- Pre-wired with water resistant switch and 3-prong power cord
- Thermally protected with Manual Override

---

## INVESTMENT

- Heavy-duty 1 **HP TEFC motor** with Viton seals
- B100 biodiesel compatibility



- Reversible flow capability
- 3" ports with stainless barbs
- Continuous duty rating
- Comprehensive warranty + professional tech support

**ROI:** Save 10–30 minutes per transfer. Across multiple jobs daily, that’s significant labor cost savings and increased throughput.

## COMPATIBILITY

### Ideal for:

- Motor Oil
- Waste Motor Oil (WMO)
- Gear Oil
- Hydraulic Fluid

### Not for:

- Water
- Highly aqueous solutions
- Highly flammable liquids

## POWER REQUIREMENTS

- Standard 15 amp residential outlet
- Generator: 3,000 W continuous / 3,500 W peak
- 12 V Inverter: 5,000 W continuous / 6,000 W peak

**Add to Cart Now** and take control of your oil transfer process with professional-grade speed, reliability, and power.

## RELATED PRODUCTS



**Portable Oil Transfer Pump Reversible Switch**



**Food Grade Stainless Oil Circulating Pump 2GPM**



**7.5HP VFD for 60GPM Pump Indoor**



**HD Portable Oil Transfer Pump - Massive Gears**

Since 2009, we have been supplying portable and stationary pumps for moving all types of oil. Oil cleaning



centrifuges are also important tools to re-use oil as fuel or lubricant.

**Contact Us:**

2121 Natomas Crossing STE 200-218

Sacramento, CA 95835

1-888-959-9311

[info@alternativefuelmecca.com](mailto:info@alternativefuelmecca.com)

