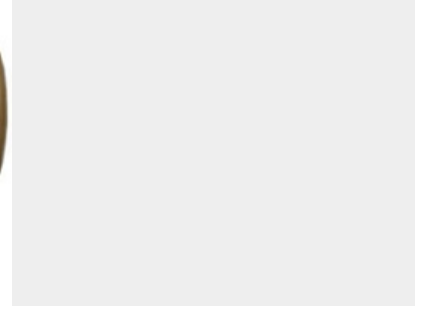
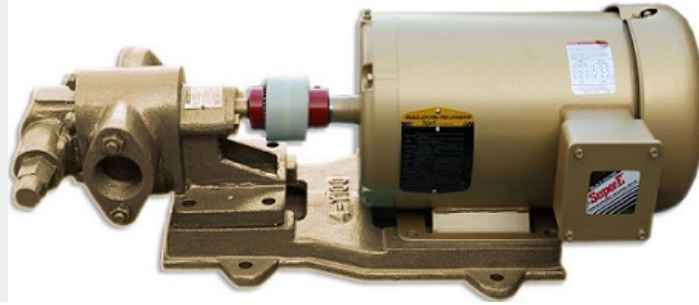
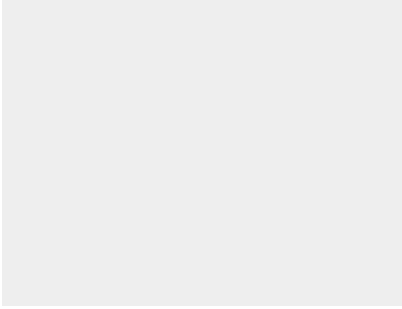




INDUSTRIAL OIL TRANSFER PUMP - 25GPM -3 PHASE

SKU: igs253



Price: \$1,782.00

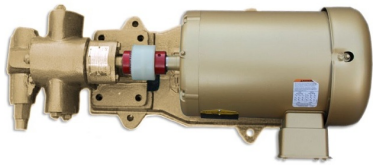
Fast and Powerful Oil Pump

Includes Bypass set at 45PSI

3HP US Made Motor

Diesel, Oil, Thermal Fluid

Categories: [Diesel Pumps](#), [Glycol Pumps](#), [Heavy Oil Pumps](#), [Light Oil Pumps](#), [Misc. Pump Products](#), [Oil Transfer Pumps](#), [Stainless Pumps](#) |



SPECIFICATIONS

Weight	90 lbs
Fluid	Diesel or Light Oils, Heavy Oils like Gear Oil, Motor Oil
Voltage	230V, 460V, 3 Phase
Speed	25GPM



PRODUCT DESCRIPTION

A stronger and stationary version of our portable transfer pumps. This pump moves thin and thick liquids fast. Comes with a 3HP Motor available in Three Phase Power 230/460V. Cast iron gears and head move oils at continuous duty.

Viton Seals are standard. Flexible coupling is connected with motor drive and pump shaft.

Features

*Self Priming - Suction height of 15ft

*Pressure Relief

*Serviceable - viton seals included

*Solid Cast Iron Construction - Carbon Steel Gears

*High Quality Motor

Not for use with corrosive liquids. **Oil Only!**

Additional Specs:

Pumphead

Flow: 25gpm @ 1800rpm

Pressure relief: .33Mpa

Shaft: 20mm

Ports: 1.5"

*Includes Base and Coupling

Motor

3HP

Continuous Duty

Baldor Premium Efficient or Explosion Proof

3 Phase

Frame: IEC 100

26L x 13T x 11 W (Assembled)

Discover the Power and Versatility of Oil Transfer Pumps

Since 2009, Alternative Fuel Mecca has been a trusted supplier of portable and stationary pumps for moving all types of oil. We also offer oil-cleaning centrifuges that help reuse oil as fuel or lubricant, emphasizing efficiency and sustainability.

What Are Oil Transfer Pumps?

Oil transfer pumps are essential tools designed to move oil from one place to another. Whether it's transferring diesel, waste oil, or any other type of oil, these pumps ensure that the job gets done quickly and efficiently. They come in various types, including diesel transfer pumps, waste oil transfer pumps, and fast diesel pumps.

Key Features and Benefits

1. Versatility

Oil transfer pumps can handle different types of oil, making them versatile for various applications. Whether you need a diesel transfer pump for your truck or a waste oil transfer pump for your garage, there's a pump that fits your needs.

2. Efficiency

Using an oil transfer pump can save you time and effort. These pumps are designed to move oil quickly, reducing the time you spend on each transfer. A fast diesel pump, for example, can significantly cut down the time needed to refuel a vehicle.

3. Portability



Many oil transfer pumps are portable, making them easy to transport and use in different locations. Whether you're out in the field or working in a shop, you can rely on these pumps to be where you need them.

4. Durability

Built to withstand tough conditions, oil transfer pumps are made from durable materials that ensure longevity and reliability. This means you can count on them to perform well over the years, even with heavy use.

Different Types of Oil Transfer Pumps

Diesel Transfer Pumps

These are specifically designed for transferring diesel fuel. They're commonly used in agriculture, construction, and transportation industries. A diesel transfer pump ensures that your machinery and vehicles are fueled up and ready to go.

Fast Diesel Pumps

Need to speed up your fueling process? Fast diesel pumps are the way to go. They provide a higher flow rate, making them ideal for situations where time is of the essence.

Waste Oil Transfer Pumps

Dealing with waste oil can be a hassle, but not with a waste oil transfer pump. These pumps are designed to handle used oil, making disposal or recycling much more manageable.

Why Choose Alternative Fuel Mecca?

At Alternative Fuel Mecca, we pride ourselves on offering top-quality oil transfer pumps. Here's why you should consider us for your pumping needs:

1. **Expertise:** With over a decade of experience, we know what works best for different oil transfer applications. Our knowledgeable staff can help you choose the right pump for your needs.
2. **Quality Products:** We only supply pumps that meet our high standards of quality and performance. When you buy from us, you can be confident that you're getting a reliable product.
3. **Customer Support:** We believe in supporting our customers long after the sale. If you have any questions or need assistance with your pump, we're here to help.

How to Choose the Right Oil Transfer Pump

The perfect pump for your oil transfer depends on what oil you have, how much, and how fast it needs to move. Here are some tips to help you make the right choice:

1. Determine Your Needs

Consider the type of oil you'll be transferring and the specific requirements of your application. For example, if you need to transfer diesel quickly, a fast diesel pump might be the best option.

2. Check the Specifications

Look at the pump's specifications, such as flow rate, pressure, and power source. Make sure these match your needs.

3. Consider Portability

If you need to move the pump around, look for a portable model. These are usually lighter and easier to transport.

4. Think About Durability

Consider the materials and construction of the pump. A durable pump will last longer and provide better value for your money.

Maintaining Your Oil Transfer Pump



To keep your oil transfer pump in good working condition, regular maintenance is essential. Here are some tips:

1. Regular Cleaning

Prevent downtime and maintain optimal performance with regular pump cleaning. This is especially important for waste oil transfer pumps, which can handle dirty oil.

2. Inspect for Wear and Tear

Inspect the pump for signs of wear, such as leaks, cracks, or loose parts. Replace worn parts as needed to maintain performance.

3. Follow Manufacturer Guidelines

Always follow the manufacturer's maintenance guidelines. This ensures that you're taking the right steps to care for your pump.

Make your oil transfer tasks easier and more efficient.

Explore our selection today and place an order.

RELATED PRODUCTS



[Gear Oil Pump - Pumphead Only](#)



[Portable Oil Transfer Pump Reversible Switch](#)



[7.5HP VFD for 60GPM Pump Indoor](#)



[2.4 GPM Viscomat Gear Oil Transfer Pump](#)

Since 2009, we have been supplying portable and stationary pumps for moving all types of oil. Oil cleaning centrifuges are also important tools to re-use oil as fuel or lubricant.

Contact Us:

2121 Natomas Crossing STE 200-218

Sacramento, CA 95835

1-888-959-9311

info@alternativefuelmecca.com

