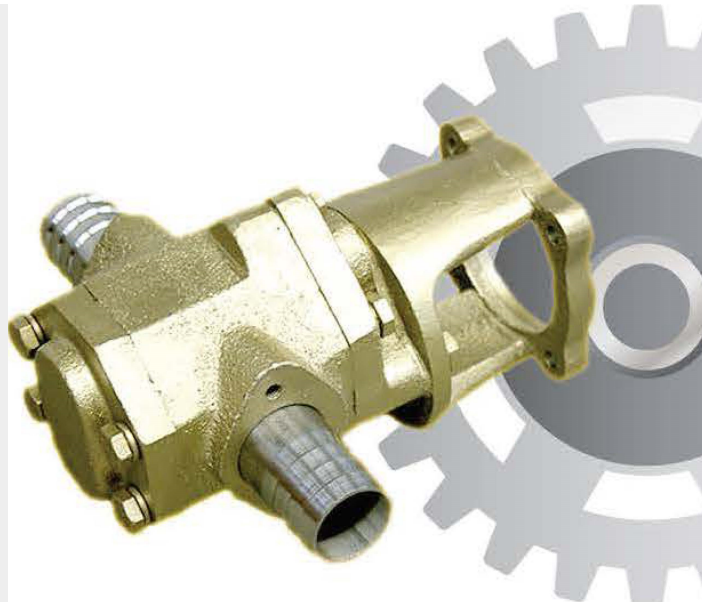




LOW FLOW GEAR PUMPHEAD

SKU: gs50



Price: ~~\$495.00~~ \$445.50

Add to Cart

Categories: [Misc. Pump Products](#) |

SPECIFICATIONS

PRODUCT DESCRIPTION

Gear Pump:

- 3/4 inch NPT inlet and outlet (for 1" ID hose)
- Large 1.056 cubic inch displacement Cast Iron Pump
- Heavy steel gears quickly transfer both light and heavy oils
- 10.5 lb net weight
- Mounts on electric and gasoline motors with flex coupler
- 14 mm shaft
- 85 mm bolt circle

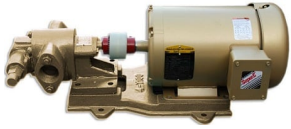
Flow Rates:

15.71 gpm @ 3400 rpm

10 gpm @ 2200 rpm

8 gpm @ 1750 rpm

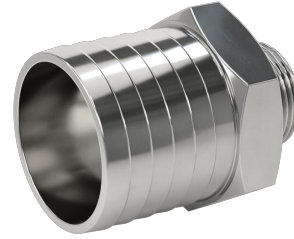
RELATED PRODUCTS



**Industrial Oil
Transfer Pump -
25GPM -3 Phase**



**480V Oil Pump at
7GPM**



**2" Hose Barb to 1"
NPT Adapter
Stainless**



**480V Oil Pump at
25GPM - Extreme
Heat**

Since 2009, we have been supplying portable and stationary pumps for moving all types of oil. Oil cleaning centrifuges are also important tools to re-use oil as fuel or lubricant.

Contact Us:

2121 Natomas Crossing STE 200-218

Sacramento, CA 95835

1-888-959-9311

info@alternativefuelmecca.com

