



## **LOW FLOW GEAR PUMPHEAD**

SKU: gs50



**Price:** ~~\$495.00~~ \$470.25

Add to Cart

Categories: [Misc. Pump Products](#) |

## **SPECIFICATIONS**

### **PRODUCT DESCRIPTION**

#### ***Gear Pump:***

- 3/4 inch NPT inlet and outlet (for 1" ID hose)
- Large 1.056 cubic inch displacement Cast Iron Pump
- Heavy steel gears quickly transfer both light and heavy oils
- 10.5 lb net weight
- Mounts on electric and gasoline motors with flex coupler
- 14 mm shaft
- 85 mm bolt circle

#### **Flow Rates:**

15.71 gpm @ 3400 rpm

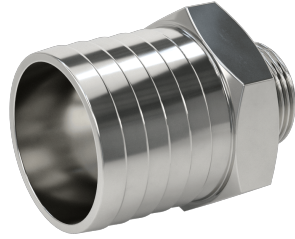
10 gpm @ 2200 rpm

8 gpm @ 1750 rpm

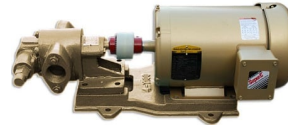
## **RELATED PRODUCTS**



**480V Oil Pump at  
25GPM - Extreme  
Heat**



**2" Hose Barb to 1"  
NPT Adapter  
Stainless**



**Industrial Oil  
Transfer Pump -  
25GPM - Single Phase**



**Replacement  
Thermostat**

Since 2009, we have been supplying portable and stationary pumps for moving all types of oil. Oil cleaning centrifuges are also important tools to re-use oil as fuel or lubricant.

**Contact Us:**

2121 Natomas Crossing STE 200-218

Sacramento, CA 95835

1-888-959-9311

[info@alternativefuelmecca.com](mailto:info@alternativefuelmecca.com)

