



LOW FLOW GEAR PUMPHEAD

SKU: gs50



Price: ~~\$495.00~~ \$470.25

Add to Cart

Categories: [Misc. Pump Products](#) |

SPECIFICATIONS

PRODUCT DESCRIPTION

Gear Pump:

- 3/4 inch NPT inlet and outlet (for 1" ID hose)
- Large 1.056 cubic inch displacement Cast Iron Pump
- Heavy steel gears quickly transfer both light and heavy oils
- 10.5 lb net weight
- Mounts on electric and gasoline motors with flex coupler
- 14 mm shaft
- 85 mm bolt circle

Flow Rates:

15.71 gpm @ 3400 rpm

10 gpm @ 2200 rpm

8 gpm @ 1750 rpm

RELATED PRODUCTS



**30FT OIL SUCTION/
DISCHARGE HOSE KIT**

COMPLETE KIT INCLUDES:

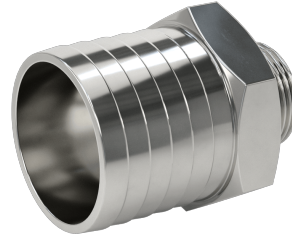
- 30FT OIL SUCTION/DISCHARGE HOSE
- 2 TYPE F ALUMINUM CAMLOCK
- 2 TYPE C ALUMINUM CAMLOCK
- 2 TYPE E ALUMINUM CAMLOCK
- 2 6PM DUST PLUG
- 4 END CAP
- 8 HOSE CLAMP



**30ft Aluminum
Camlock Hose Kit**



**1HP VFD for 12GPM
Pump - Switched
Outdoor**



**2" Hose Barb to 1"
NPT Adapter
Stainless**



**Replacement
Thermostat**

Since 2009, we have been supplying portable and stationary pumps for moving all types of oil. Oil cleaning centrifuges are also important tools to re-use oil as fuel or lubricant.

Contact Us:

2121 Natomas Crossing STE 200-218
Sacramento, CA 95835
1-888-959-9311
info@alternativefuelmecca.com

