



## LOW FLOW GEAR PUMPHEAD

SKU: gs50



Price: ~~\$495.00~~ \$470.25

Add to Cart

Categories: [Misc. Pump Products](#) |

## SPECIFICATIONS

### PRODUCT DESCRIPTION

#### *Gear Pump:*

- 3/4 inch NPT inlet and outlet (for 1" ID hose)
- Large 1.056 cubic inch displacement Cast Iron Pump
- Heavy steel gears quickly transfer both light and heavy oils
- 10.5 lb net weight
- Mounts on electric and gasoline motors with flex coupler
- 14 mm shaft
- 85 mm bolt circle

#### **Flow Rates:**

15.71 gpm @ 3400 rpm

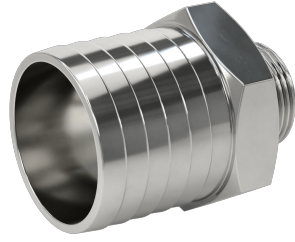
10 gpm @ 2200 rpm

8 gpm @ 1750 rpm

## RELATED PRODUCTS



**39 GPM Digital Oil  
Flow Meter 1.5"**



**2" Hose Barb to 1"  
NPT Adapter  
Stainless**



**HD Portable Oil  
Transfer Pump -  
Massive Gears**



**480V Oil Pump at  
25GPM - Extreme  
Heat**

Since 2009, we have been supplying portable and stationary pumps for moving all types of oil. Oil cleaning centrifuges are also important tools to re-use oil as fuel or lubricant.

**Contact Us:**

2121 Natomas Crossing STE 200-218  
Sacramento, CA 95835  
1-888-959-9311  
[info@alternativefuelmecca.com](mailto:info@alternativefuelmecca.com)

