



LOW FLOW GEAR PUMPHEAD

SKU: gs50



Price: ~~\$495.00~~ \$470.25

Add to Cart

Categories: [Misc. Pump Products](#) |

SPECIFICATIONS

PRODUCT DESCRIPTION

Gear Pump:

- 3/4 inch NPT inlet and outlet (for 1" ID hose)
- Large 1.056 cubic inch displacement Cast Iron Pump
- Heavy steel gears quickly transfer both light and heavy oils
- 10.5 lb net weight
- Mounts on electric and gasoline motors with flex coupler
- 14 mm shaft
- 85 mm bolt circle

Flow Rates:

15.71 gpm @ 3400 rpm

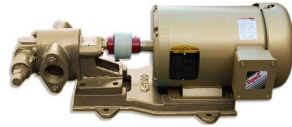
10 gpm @ 2200 rpm

8 gpm @ 1750 rpm

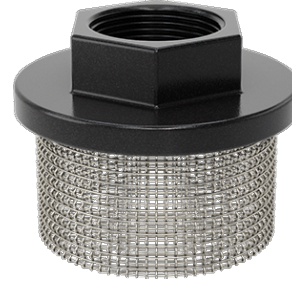
RELATED PRODUCTS



**3 Phase Gear Pump
Motor - Brook
Crompton**



**Industrial Oil
Transfer Pump -
25GPM -3 Phase**



**Suction Strainer for
Pumps**



**Gas Motor Plate
Adapter**

Since 2009, we have been supplying portable and stationary pumps for moving all types of oil. Oil cleaning centrifuges are also important tools to re-use oil as fuel or lubricant.

Contact Us:

2121 Natomas Crossing STE 200-218
Sacramento, CA 95835
1-888-959-9311
info@alternativefuelmecca.com

