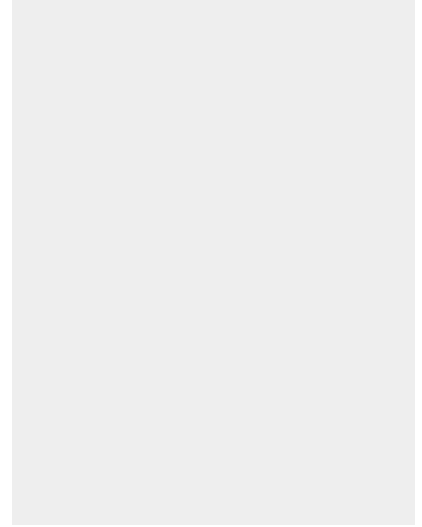
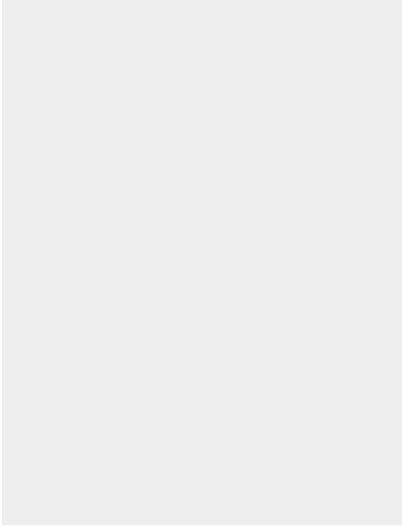




MEAN GREEN OIL PUMP - 12GPM

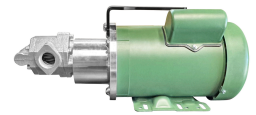
SKU: IC-12-120-FD



Price: ~~\$980.00~~ \$931.00

Add to Cart

Categories: [Heavy Oil Pumps](#), [Light Oil Pumps](#), [Oil Transfer Pumps](#), [Stainless Pumps](#) |

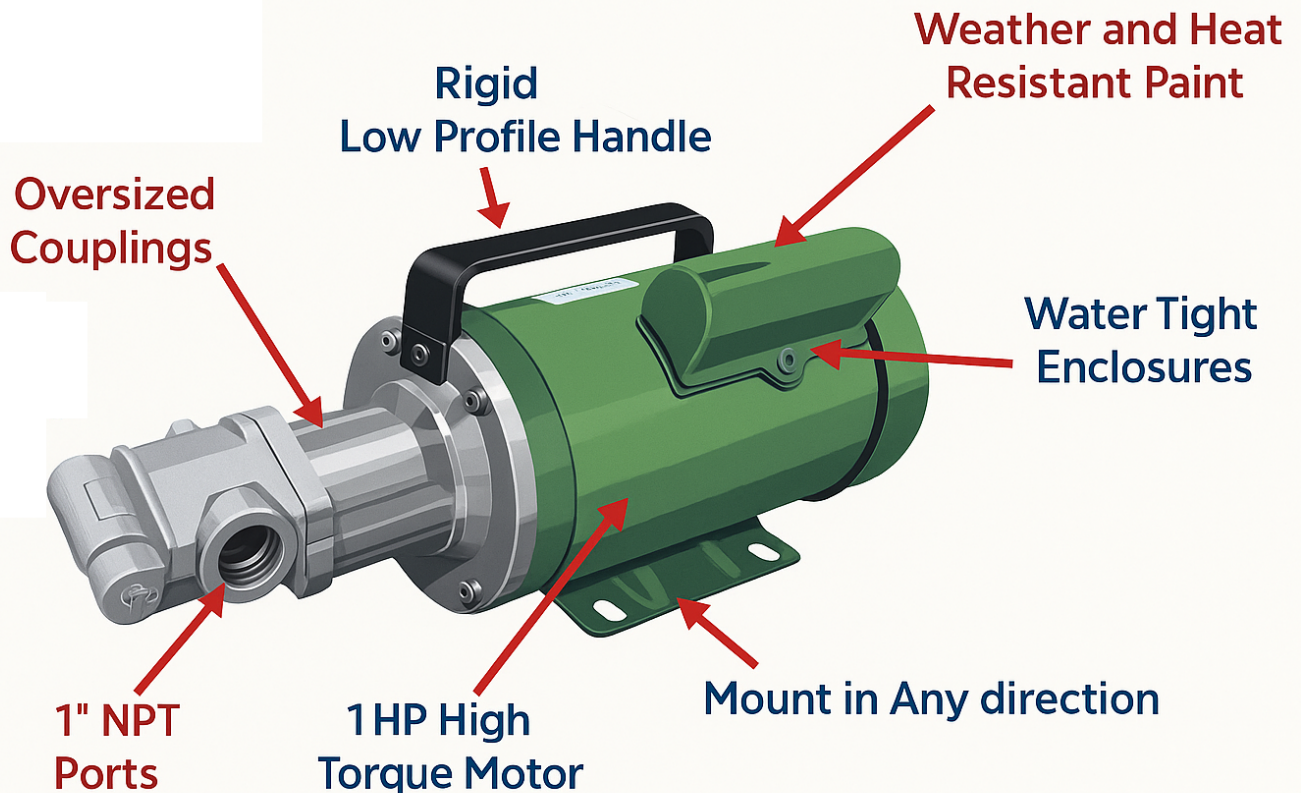


SPECIFICATIONS

Weight	55 lbs
Dimensions	20 x 14 x 16 in
Fluid	Diesel or Light Oils, Heavy Oils like Gear Oil, Motor Oil
Speed	12GPM
Voltage	120V, 230V



PRODUCT DESCRIPTION



12 GALLONS PER MINUTE OIL PUMP • 120V

MOVE THICK FLUIDS FAST - NOW WITH A 1 HP FARM DUTY MOTOR!

In a professional shop, every minute counts. Slow oil transfers don't just waste time—they impact your bottom line, delay job completion, and keep customers waiting. That's revenue walking out your door.

Introducing the Heavy Duty 12 GPM Portable Oil Transfer Pump — now powered by a rugged **1 HP Farm Duty motor** for superior performance and durability. This industrial powerhouse revolutionizes your oil transfer process.

Since 2009, Alternative Fuel Mecca has been supplying professional-grade equipment to shops nationwide. We understand the demands of daily operations, and we build pumps to keep up.

WHAT YOU GET

- **Best Portable Pump for Viscous Fluids:** Transfer **12 gallons per minute** (empty a 55-gallon drum in ~5 minutes)
- **Pump from a Distance:** Self-priming design for immediate pumping. Suction lift is 15' and push height is 90'.
- **Industrial Durability:** Built for professional daily use
- **Long-Term Reliability:** Motor is built to last. Easy seal replacement and servicing.
- **Professional Technical Assistance** and Extended Warranty Option



DETAILED SPECIFICATIONS

Overall Specs

- Dimensions: 17" × 11" × 7"
- Weight: 50 lbs
- Temperature Rating: Up to 375 °F
- Flow Rate: **12 GPM (heavy duty, thick fluids)**
- Ports: 1" NPT with hose barbs or cam-lock quick connects.
- Seals: **Viton** (B100 biodiesel compatible)
- Self-priming design with **reversible flow**

Pumphead Specs

- 1" NPT Female Ports
- 1" Threaded Barbed Adapters or Tri Clamp
- Close Coupled gears
- No bypass for heavy oils
- Stainless or Cast Iron
- 1 gasket and 1 viton seal(on shaft)
- 14mm shaft
- Includes oversized Lovejoy L075 spider couplings

Motor Specs

- Power: **3/4 HP, single-phase Motor**
- Voltage: **115/230 V**, 60 Hz (dual voltage ready)
- RPM: **1,725–1,800 RPM** for steady torque under load
- Enclosure: **TEFC (Totally Enclosed Fan Cooled), IP54** dust & water resistant
- Insulation: **Class F, VPI impregnated windings** for heat & moisture resistance
- Shaft & Bearings: **14 mm keyed shaft, double-sealed ball bearings**, with improved drive-end seal
- Service Factor: **1.15**, handles overloads with ease
- Starting: **Capacitor start / induction run** for strong startup torque
- Corrosion Resistance: **Anti-rust rotor coating** for extended lifespan
- Farm Duty 1HP industrial motor
- 6.5 amp draw
- Pre-wired with water resistant switch and 3-prong power cord
- Thermally protected with Manual Override

INVESTMENT

\$965.00 – includes:

- Heavy-duty **3/4 HP TEFC motor** with Viton seals
- B100 biodiesel compatibility
- Reversible flow capability
- 1" ports with stainless barbs
- Continuous duty rating
- Comprehensive warranty + professional tech support

ROI: Save 10–30 minutes per transfer. Across multiple jobs daily, that's significant labor cost savings and increased throughput.



COMPATIBILITY

Ideal for:

- Motor Oil
- Waste Motor Oil (WMO)
- Gear Oil
- Hydraulic Fluid

Not for:

- Water
- Highly aqueous solutions
- Highly flammable liquids

POWER REQUIREMENTS

- Standard 15 amp residential outlet
- Generator: 3,000 W continuous / 3,500 W peak
- 12 V Inverter: 5,000 W continuous / 6,000 W peak

Add to Cart Now and take control of your oil transfer process with professional-grade speed, reliability, and power.

RELATED PRODUCTS



**Gear Oil Pump -
Pumphead Only**



**Portable Oil Transfer
Pump Reversible
Switch**



**480V Oil Pump
25GPM**



**24GPM 12V Oil
Transfer Pump**

Since 2009, we have been supplying portable and stationary pumps for moving all types of oil. Oil cleaning centrifuges are also important tools to re-use oil as fuel or lubricant.

Contact Us:

2121 Natomas Crossing STE 200-218

Sacramento, CA 95835

1-888-959-9311

info@alternativefuelmecca.com

