



## **PISTON POSITIVE DISPLACEMENT FLOW METER**

**SKU:** 682wtp



**Price:** \$8,995.00 ~~\$8,545.25~~

Add to Cart

TCS 682 Series Flow meter with air exhaust and printer.

50 Gallons/Minute

Electronic register

**Categories:** [Misc. Pump Products](#) |



### **SPECIFICATIONS**

#### **PRODUCT DESCRIPTION**

##### **Design Principle**

The TCS 682 reciprocating piston flow meter is a true positive displacement meter that has a unique inline design consisting of three reciprocating pistons operating within their respective measuring chambers. Each piston works in a manner similar to an automobile engine. The pistons are fitted to a wobble plate, which has a shaft extending from its upper surface and a valve pivot attached beneath it.



The valve pivot drives a sliding valve from piston to piston as a known amount of product flows through each cylindrical bore, controlling the sequence of events in a smooth mechanical motion. This smooth mechanical motion is then transferred through the drive shaft to the register.

**Performance Features**

The TCS 682 reciprocating piston flow meter combines outstanding accuracy (0.1% of flow rate) with one of the widest turndown ratios in the industry (250:1). The TCS 682 reciprocating piston flow meter has a rugged industrial design that is tolerant to changing

viscosities, temperatures and liquids with suspensions and solids. This proven design has over 80 years of unmatched performance and continues to provide the very best in flow measurement, backed by our industry leading 10 year warranty (5 year warranty LPG)!

FLOW RANGE: 0.2 to 50 GPM (0.76 to 189 LPM); 250:1 Turndown Ratio

LP Flow Rates: 2 to 50 GPM (7.5 to 189 LPM); 25:1 Turndown Ratio

LINEAR ACCURACY: Capable of ± 0.1% over the full flow range

REPEATABILITY: Capable of 0.01%

OPERATING PRESSURE: Up to 150 PSI (10.5 BAR); 350 PSI (26 BAR) on LP meter type

TEMPERATURE RANGE: -40°F to 160°F (-40°C to 71°C)

VISCOSITY RANGE: Will accurately measure liquids up to 50,000 SSU (11,000 CPS)

CONNECTIONS: 1-1/2" NPT Companion flanges are standard, 1" & 2" NPT optional. BSPT, slip weld, and ANSI flanges

are available upon request.

REGULATORY: NIST, OIML, NMI, SABS, S. WA and other global regulatory approvals. (Contact factory for information on specific approvals.)

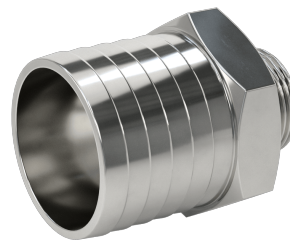
**RELATED PRODUCTS**



**12-48v Variable Speed Controller**



**480V Oil Pump at 25GPM - Extreme Heat**



**2" Hose Barb to 1" NPT Adapter Stainless**



**3HP VFD for 25GPM Pump Indoor**

Since 2009, we have been supplying portable and stationary pumps for moving all types of oil. Oil cleaning centrifuges are also important tools to re-use oil as fuel or lubricant.

**Contact Us:**

2121 Natomas Crossing STE 200-218



**Alternative Fuel Mecca**

2121 Natomas Crossing STE 200-218

Sacramento, CA 95835

1-888-959-9311

[info@alternativefuelmecca.com](mailto:info@alternativefuelmecca.com)

---

Sacramento, CA 95835

1-888-959-9311

[info@alternativefuelmecca.com](mailto:info@alternativefuelmecca.com)

