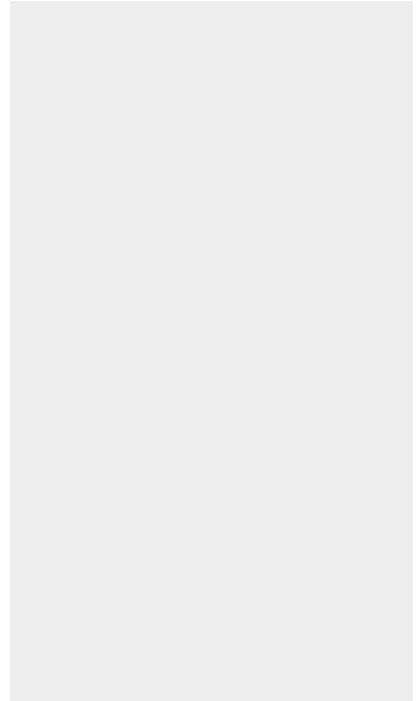




## PULSATION DAMPENER FOR DIAPHRAGM PUMPS

SKU: PDM200-M3T3



**Price:** \$1,595.00

[Add to Cart](#)

**Categories:** [Misc. Pump Products](#) |



### SPECIFICATIONS

<b>Weight</b>	5 lbs
<b>Dimensions</b>	10 x 10 x 10 in

### PRODUCT DESCRIPTION

#### **PULSATION DAMPENERS FOR AIR OPERATED DOUBLE DIAPHRAGM PUMPS**

##### **Overview**

The All-Flo PDM Series Metal Pulsation Dampeners are engineered accessories for Air-Operated Double Diaphragm (AODD) pump systems. Designed to install at the pump's discharge, they smooth out pressure and flow fluctuations, improving performance, reducing wear, and protecting downstream instrumentation.



## Features & Benefits

- Delivers **steady discharge pressure and flow** for more consistent system operation
- **Minimizes vibration** across the pumping system
- **Reduces mechanical load** on the pump, helping extend service life
- **Safeguards sensitive downstream instrumentation** by dampening pulsation spikes
- Built to **enhance overall equipment reliability and longevity**

## Applications

The PDM Series is suited for a wide variety of systems and industries, including but not limited to:

- Container filling
- Metering and dosing systems
- Food production lines
- Paints, resins, and coatings
- General industrial processes
- Water and wastewater treatment
- Filtration
- Ceramic manufacturing
- Semiconductor processing

## Specifications & Construction

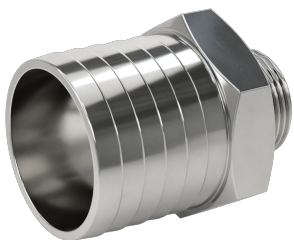
Parameter	Details
<b>Liquid Port Sizes</b>	1", 1½", 2", 3" ( <a href="#">PSG</a> )
<b>Liquid Connection Types</b>	MNPT, BSPT, or ANSI/DIN flange (flange option only for 3") ( <a href="#">PSG</a> )
<b>Air Inlet / Exhaust</b>	1/8" NPT for all sizes ( <a href="#">PSG</a> )
<b>Max Dimensions</b>	Up to 13.4 in (height) × 18.7 in (width/depth) in the largest size ( <a href="#">PSG</a> )
<b>Material - Wet End &amp; Air End</b>	316L stainless steel ( <a href="#">PSG</a> )
<b>Diaphragm</b>	PTFE (Teflon) ( <a href="#">PSG</a> )

These dampeners are available in a bolted-metal construction, making them robust and suitable for aggressive fluid environments. ([PSG](#))

## Why Choose the PDM Series?

- The metal construction gives excellent durability for harsh or demanding fluids
- PTFE diaphragm ensures chemical resistance and long life
- Versatile connection options (threaded and flanged) adapt to varied piping systems
- Compact footprint with multiple size options allows selection tailored to system requirements

## RELATED PRODUCTS



2" Hose Barb to 1"



Suction Strainer for



**NPT Adapter  
Stainless**

**Extreme Oil  
Centrifuge**

**15 GPM Digital Oil  
Pump Flow Meter 1"**

**Pumps**

Since 2009, we have been supplying portable and stationary pumps for moving all types of oil. Oil cleaning centrifuges are also important tools to re-use oil as fuel or lubricant.

**Contact Us:**

2121 Natomas Crossing STE 200-218

Sacramento, CA 95835

1-888-959-9311

[info@alternativefuelmecca.com](mailto:info@alternativefuelmecca.com)

