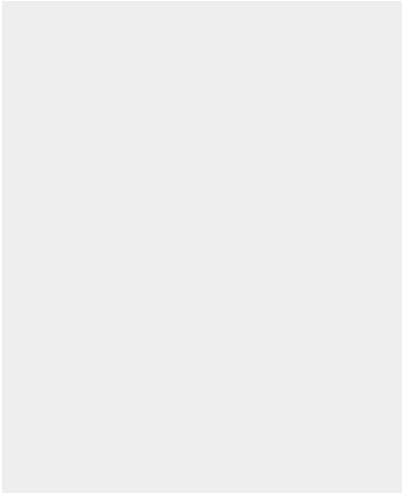




PUMPHEAD FOR GAS MOTOR

SKU: gas-h1



Price: \$750.00 \$712.50

Add to Cart

Categories: [Misc. Pump Products](#) |



SPECIFICATIONS

Weight	20 lbs
Dimensions	10 x 6 x 4 in

PRODUCT DESCRIPTION

Motor Specs: Mounting base pattern: 162mm L x 75.5mm W - 80.5mm W (6.40" L x 2.95" W - 3.17" W)

Bolt Circle: 3-5/8" Mounting Bolts 5/16"-18 x 3/4" *** Shaft Length: 2.4"

*** Some motors use 5/16"-24 x 3/4" , these bolt are also included

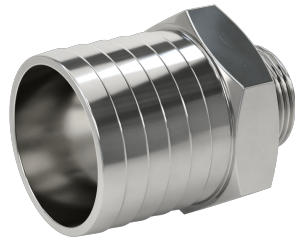
3/4" or 16mm shaft coupling included.



RELATED PRODUCTS



480V Oil Pump at 7GPM



2" Hose Barb to 1" NPT Adapter Stainless



Basic Oil Centrifuge



In Line Suction Strainer 1"

Since 2009, we have been supplying portable and stationary pumps for moving all types of oil. Oil cleaning centrifuges are also important tools to re-use oil as fuel or lubricant.

Contact Us:

2121 Natomas Crossing STE 200-218
Sacramento, CA 95835
1-888-959-9311
info@alternativefuelmecca.com

