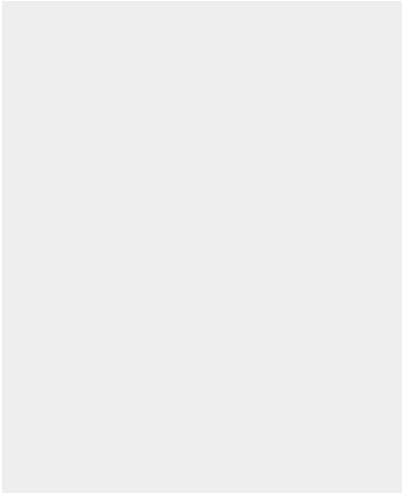




PUMPHEAD FOR GAS MOTOR

SKU: gas-h1



Price: \$750.00 \$712.50

Add to Cart

Categories: [Misc. Pump Products](#) |



SPECIFICATIONS

Weight	20 lbs
Dimensions	10 x 6 x 4 in

PRODUCT DESCRIPTION

Motor Specs: Mounting base pattern: 162mm L x 75.5mm W - 80.5mm W (6.40" L x 2.95" W - 3.17" W)

Bolt Circle: 3-5/8" Mounting Bolts 5/16"-18 x 3/4" *** Shaft Length: 2.4"

*** Some motors use 5/16"-24 x 3/4" , these bolt are also included

3/4" or 16mm shaft coupling included.



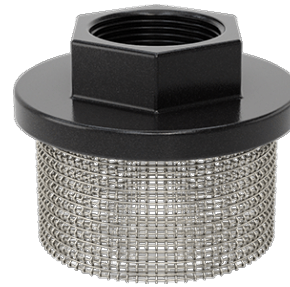
RELATED PRODUCTS



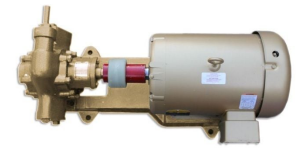
**Replacement
Thermostat**



Basic Oil Centrifuge



**Suction Strainer for
Pumps**



**Industrial Oil
Transfer Pump -
60GPM**

Since 2009, we have been supplying portable and stationary pumps for moving all types of oil. Oil cleaning centrifuges are also important tools to re-use oil as fuel or lubricant.

Contact Us:

2121 Natomas Crossing STE 200-218
Sacramento, CA 95835
1-888-959-9311
info@alternativefuelmecca.com

