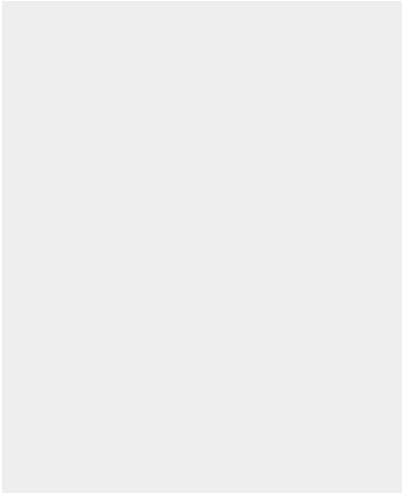




## PUMPHEAD FOR GAS MOTOR

SKU: gas-h1



Price: \$750.00

Add to Cart

Categories: [Misc. Pump Products](#) |



### SPECIFICATIONS

<b>Weight</b>	20 lbs
<b>Dimensions</b>	10 x 6 x 4 in

### PRODUCT DESCRIPTION

Motor Specs: Mounting base pattern: 162mm L x 75.5mm W - 80.5mm W (6.40" L x 2.95" W - 3.17" W )

Bolt Circle: 3-5/8" Mounting Bolts 5/16"-18 x 3/4" \*\*\* Shaft Length: 2.4"

\*\*\* Some motors use 5/16"-24 x 3/4" , these bolt are also included

3/4" or 16mm shaft coupling included.



**RELATED PRODUCTS**



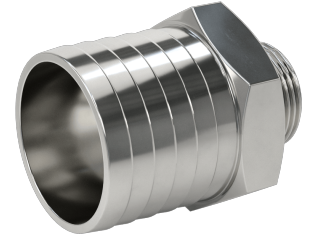
**3 Phase Gear Pump Motor - Brook Crompton**



**480V Oil Pump at 25GPM - Extreme Heat**



**30ft Aluminum Camlock Hose Kit**



**2" Hose Barb to 1" NPT Adapter Stainless**

Since 2009, we have been supplying portable and stationary pumps for moving all types of oil. Oil cleaning centrifuges are also important tools to re-use oil as fuel or lubricant.

**Contact Us:**

2121 Natomas Crossing STE 200-218

Sacramento, CA 95835

1-888-959-9311

[info@alternativefuelmecca.com](mailto:info@alternativefuelmecca.com)

