



## **SANITARY DIAPHRAGM PUMP - STAINLESS**

**SKU:** sdia-100



**Price:** ~~\$2,320.00~~ \$2,200.00

- Stainless Sanitary Pump for Food
- 100 gallon/minute flow rate
- Easy Clean Setup

**Categories:** [Misc. Pump Products](#), [Stainless Pumps](#) |



### **SPECIFICATIONS**

<b>Weight</b>	75 lbs
<b>Fluid</b>	Sanitary or Caustic Fluids



<b>Voltage</b>	Pneumatic
<b>Speed</b>	100GPM



## PRODUCT DESCRIPTION

Premium Stainless Steel Diaphragm Pump Industrial-Grade Performance for Critical Operations

Performance Specs: • Max Flow Rate: 378.5L/min • Max Head: 84m • 304 or 316L Stainless Construction •

Warranty: 5 years comprehensive

Core Features: • Corrosion-resistant, sanitary design • Self-priming with leak-free operation • Low maintenance requirements • Customizable configurations (OEM/ODM/OBM) • Tool-free maintenance access • Quick-disconnect fittings

Perfect For: • Food & Beverage Production • Pharmaceutical Manufacturing • Automotive Operations • Biofuel Processing • Marine Applications • Water Treatment • Agricultural Systems

What Sets It Apart: • Medical-grade construction meets stringent industry standards • Versatile enough for harsh industrial environments • Easy cleaning and sanitization • Comprehensive support package included •

Full documentation and technical assistance

\*Good up to 260°F

\*15' Vertical priming/suction Lift

\*2" Inlet/Outlet Ports

## RELATED PRODUCTS



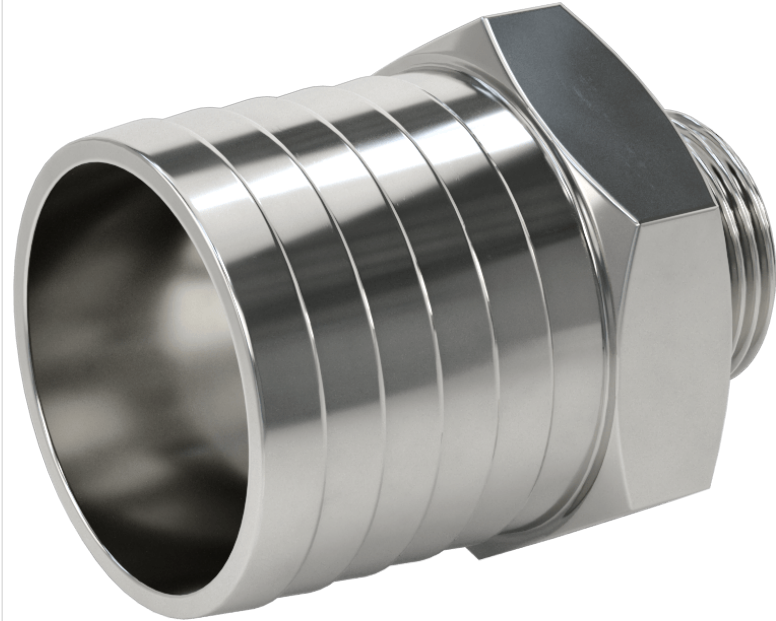
[Basic Oil Centrifuge](#)



[Gas Motor Plate Adapter](#)



[Replacement Thermostat](#)



[2" Hose Barb to 1" NPT Adapter Stainless](#)

Since 2009, we have been supplying portable and stationary pumps for moving all types of oil. Oil cleaning centrifuges are also important tools to re-use oil as fuel or lubricant.

### Contact Us:

2121 Natomas Crossing STE 200-218

Sacramento, CA 95835

1-888-959-9311

[info@alternativefuelmecca.com](mailto:info@alternativefuelmecca.com)



