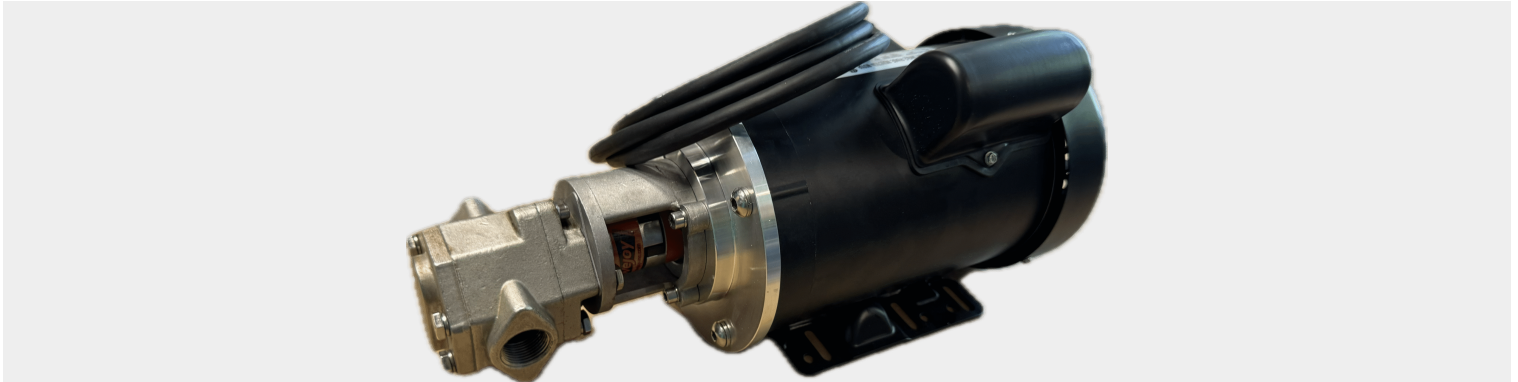




VARIABLE SPEED OIL PUMP - 12GPM

SKU: oil-VFD-12



Price: ~~\$985.00~~ \$935.75

Add to Cart

Variable Speed Gear Pump
1-3 Gallons/minute
Runs off a VFD
Supply with 120/230/480V
VFD not included
Bypass Optional

Categories: [Diesel Pumps](#), [Heavy Oil Pumps](#), [Light Oil Pumps](#), [Oil Transfer Pumps](#) |

SPECIFICATIONS

| | |
|-------------------|-----------------|
| Weight | 45 lbs |
| Dimensions | 20 x 14 x 16 in |

PRODUCT DESCRIPTION

Additional Specs:

- *Dimensions: 17" long x 11" wide x 7" tall (43 cm x 28 cm x 18 cm)
- *Weight: 45lbs
- *Self Priming
- *Suction Height: 15ft
- *Push Lift Height: 90ft
- *Reversible** - Rewire or add a switch to allow dual directional flow!
- *Viton Seals
- *B100 compatible
- *Temperature Rating of 350°F
- *Duty Cycle: Continuous
- *Priming: Self priming
- *12gpm(50 liters/min): 1" NPT threaded ports, 1.25" hose barbs
- *Pump needs oil/diesel/glycol to lubricate the gears. Will not work with water.

Motor Specs

- *Commercial Duty



- *Output: 1 HP
- *Speed: 1725 RPM
- *Volts: 230/460v(Accepts 120V with VFD)
- *Hertz: 60
- *Shaft Size: 5/8"
- *Shaft Woodruff Key: 5 mm width x 5 mm deep x 16 mm length
- *Motor Base Mount: 4.5" Long x 6.56" Wide

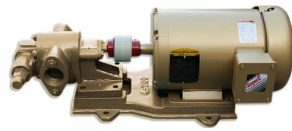
Pumphead Specs

- *Bolt Pattern: 7 mm holes on a 85 mm circle
- *Shaft Size: 14 mm keyed shaft
- *Shaft Woodruff Key: 5 mm width x 5 mm deep x 12 mm length
- *Viton Seals
- *Self Priming
- *Cast Iron
- *1" NPT Ports
- *Pressure Regulator/Bypass Optional

RELATED PRODUCTS



24GPM 12V Oil Transfer Pump



Industrial Oil Transfer Pump - 25GPM -3 Phase



Industrial Oil Transfer Pump - 60GPM



480V Oil Pump 25GPM

Since 2009, we have been supplying portable and stationary pumps for moving all types of oil. Oil cleaning centrifuges are also important tools to re-use oil as fuel or lubricant.

Contact Us:

2121 Natomas Crossing STE 200-218
Sacramento, CA 95835
1-888-959-9311
info@alternativefuelmecca.com

