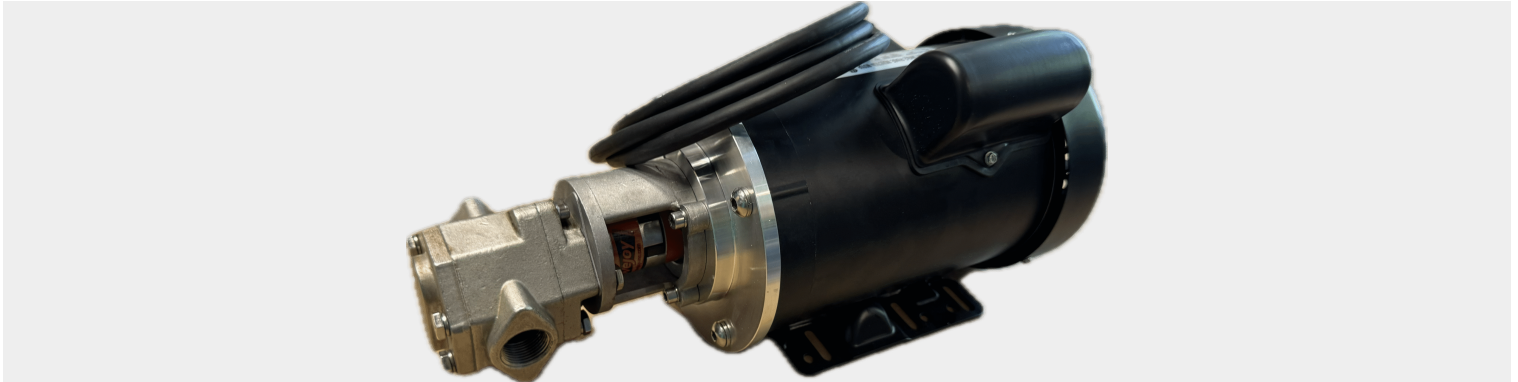




## **VARIABLE SPEED OIL PUMP - 1-3GPM**

**SKU:** oil-VFD-3



**Price:** ~~\$985.00~~ \$935.75

Add to Cart

Variable Speed Gear Pump  
1-3 Gallons/minute  
Runs off a VFD  
Supply with 120/230/480V  
VFD not included  
Bypass Optional

**Categories:** [Diesel Pumps](#), [Heavy Oil Pumps](#), [Light Oil Pumps](#), [Oil Transfer Pumps](#) |

### **SPECIFICATIONS**

<b>Dimensions</b>	20 x 14 x 16 in
-------------------	-----------------

### **PRODUCT DESCRIPTION**

#### **Additional Specs:**

- \*Dimensions: 17" long x 11" wide x 7" tall (43 cm x 28 cm x 18 cm)
- \*Weight: 45lbs
- \*Self Priming
- \*Suction Height: 15ft
- \*Push Lift Height: 90ft
- \*Reversible** - Rewire or add a switch to allow dual directional flow!
- \*Viton Seals
- \*B100 compatible
- \*Temperature Rating of 350°F
- \*Duty Cycle: Continuous
- \*Priming: Self priming
- \*3gpm(12 liters/min): 1" NPT threaded ports, 1.25" hose barbs
- \*Pump needs oil to lubricate the gears. Will not work with water.

#### **Motor Specs**

- \*Commercial Duty
- \*Output: 1 HP



- \*Speed: 1725 RPM
- \*Volts: 230/460v(Accepts 120V with VFD)
- \*Hertz: 60
- \*Shaft Size: 5/8"
- \*Shaft Woodruff Key: 5 mm width x 5 mm deep x 16 mm length
- \*Motor Base Mount: 4.5" Long x 6.56" Wide

**Pumphead Specs**

- \*Bolt Pattern: 7 mm holes on a 85 mm circle
- \*Shaft Size: 14 mm keyed shaft
- \*Shaft Woodruff Key: 5 mm width x 5 mm deep x 12 mm length
- \*Viton Seals
- \*Self Priming
- \*Cast Iron
- \*1/2" NPT Ports
- \*No Pressure Regulator

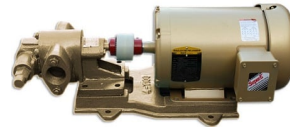
**RELATED PRODUCTS**



**230V Oil Pump  
25GPM - 2HP**



**24GPM 12V Oil  
Transfer Pump**



**Industrial Oil  
Transfer Pump -  
25GPM - Single Phase**



**7.5HP VFD for 60GPM  
Pump Indoor**

Since 2009, we have been supplying portable and stationary pumps for moving all types of oil. Oil cleaning centrifuges are also important tools to re-use oil as fuel or lubricant.

**Contact Us:**

2121 Natomas Crossing STE 200-218

Sacramento, CA 95835

1-888-959-9311

[info@alternativefuelmecca.com](mailto:info@alternativefuelmecca.com)

